



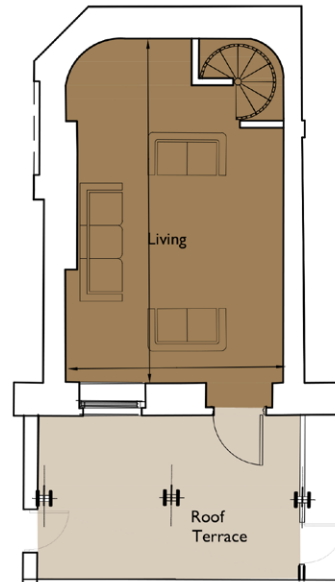
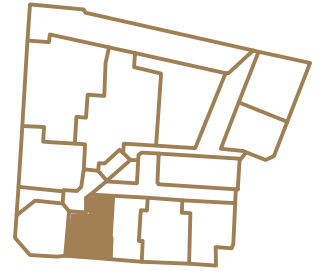
# THE GENERAL BRISTOL

## Floorplan – Plot I-05

2 bedroom duplex apartment  
Lower Ground Floor & Ground Floor  
Total area 1345 sq ft (125 sq m)

Living	23ft 11in x 15ft	(7.3m x 4.6m)
Dining	17ft 8in x 9ft 10in	(5.4m x 3m)
Kitchen	13ft 9in x 11ft 6in	(4.2m x 3.4m)
Bedroom 1	14ft 5in x 8ft 2in	(3.2m x 3m)
Bedroom 2	10ft 6in x 10ft 2in	(3.2m x 3.1m)
Snug	7ft 10in x 10ft 2in	(2.4m x 3.1m)

N  
Bathurst  
Basin



01179 255 333  
sales@cityandcountry.co.uk  
www.cityandcountry.co.uk

CITY & COUNTRY

The information in this document is intended as a guide only and is subject to change without prior notice. Accordingly, due to the City & Country policy of continual improvement, the finished product may vary from the information provided and City & Country reserves the right to amend the specification. All dimensions stated are approximate only with maximum dimensions and may alter through the construction phase and with interior finishes. You are therefore advised not to order any carpets, appliances or other goods which depend upon accurate dimensions before carrying out a check measure within your reserved property. August 2014.