



# THE GENERAL

BRISTOL

## Floorplan – Plot 7-02

2 bedroom apartment

First & Mezzanine Floor

Total area 1410 sq ft (131 sq m)

Living/Dining/Kitchen

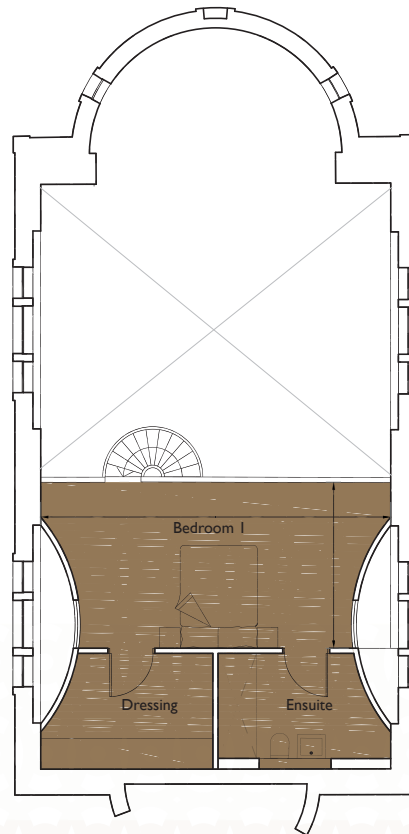
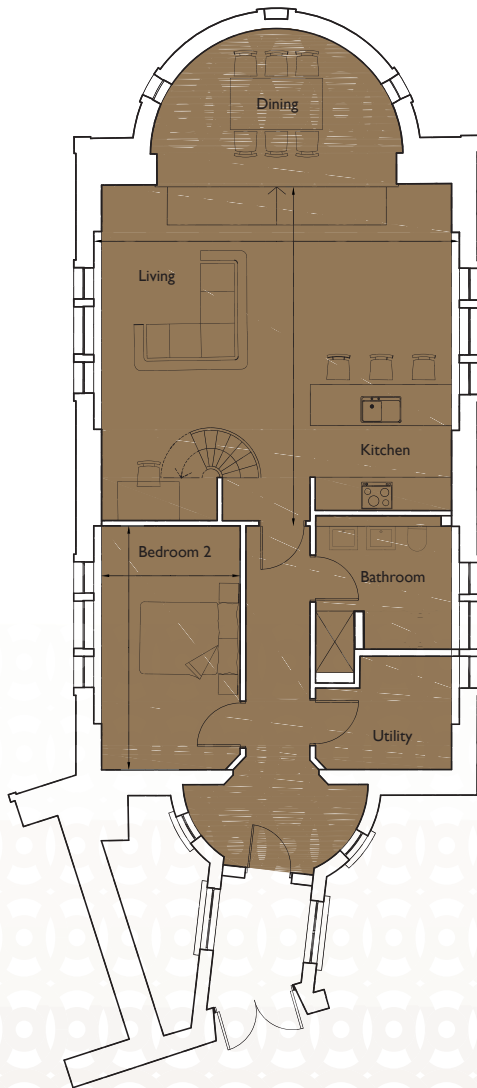
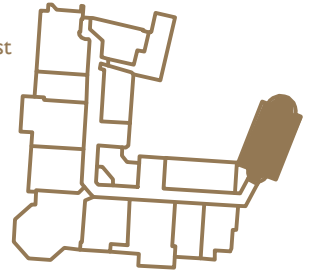
23.3ft x 21.8ft (7.1m x 6.6m)

Bedroom 1 22.3ft x 10.5ft (6.8m x 3.2m)

Bedroom 2 8.9ft x 15.7ft (2.7m x 4.8m)



Bathurst  
Basin



01179 255 333  
sales@cityandcountry.co.uk  
www.cityandcountry.co.uk

CITY & COUNTRY

The information in this document is intended as a guide only and is subject to change without prior notice. Accordingly, due to the City & Country policy of continual improvement, the finished product may vary from the information provided and City & Country reserves the right to amend the specification. All dimensions stated are approximate only with maximum dimensions and may alter through the construction phase and with interior finishes. You are therefore advised not to order any carpets, appliances or other goods which depend upon accurate dimensions before carrying out a check measure within your reserved property. August 2014.