

THE NEW YARD

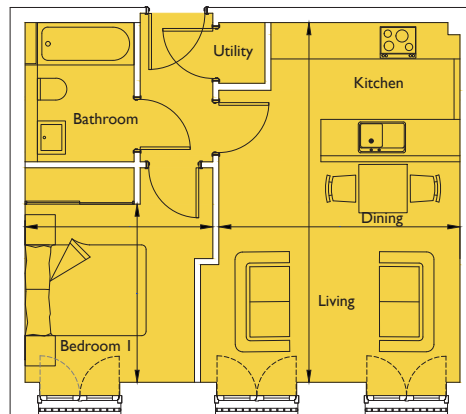
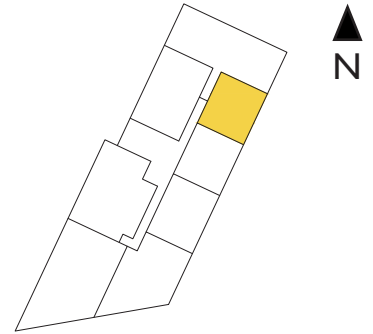
THE GENERAL
BRISTOL

Floorplan - Plot 10-14

I Bedroom Apartment
First Floor

Total area 470 sq ft (43.7 sq m)

Living/Kitchen/Dining	13'1" x 19'4"	(4.00m x 5.90m)
Bedroom I	10'2" x 9'5"	(3.10m x 2.90m)



0117 92 55 333

e: thegeneral@cityandcountry.co.uk | w: www.cityandcountry.co.uk

CITY & COUNTRY

CONSUMER
CODE FOR
HOME BUILDERS

www.consumercode.co.uk

The information in this document is intended as a guide only and is subject to change without prior notice. Accordingly, due to the City & Country policy of continual improvement, the finished product may vary from the information provided and City & Country reserves the right to amend the specification. All dimensions stated are approximate only with maximum dimensions and may alter through the construction phase and with interior finishes. You are therefore advised not to order any carpets, appliances or other goods which depend upon accurate dimensions before carrying out a check measure within your reserved property. October 2017.