



*the*  
WILSON  
*floorplan brochure*

---

## Introduction



### The Wilson

NAMED AFTER WILLIAM WILSON, THE HIGH SHERIFF OF KENT, WHO INHERITED THE ESTATE IN 1720, THIS UNIQUE APARTMENT INCLUDES MANY IMPRESSIVE FEATURES OF THE ORIGINAL BUILDING AND BENEFITS FROM TWO PRIVATE TERRACES.

The Wilson is a light and bright two bedroom property, featuring a beautiful dual-aspect terrace that benefits from views of the gardens, woodland and golf course beyond. The spacious master bedroom features a luxurious en suite and access to the private terrace. The handmade kitchen with open plan dining and living area also benefits from full height glazed sliding doors to the terrace.



**Introduction**

**Gallery**  
The Mansion

**Gallery**  
The Wilson

**Dimensions**

**Floorplan**

**Specification**

## Gallery – The Mansion

Discover luxury that transcends the ordinary



[Introduction](#)



[Gallery  
The Wilson](#)

[Dimensions](#)

[Floorplan](#)

[Specification](#)



*The Mansion's impressive Nash colonades*

[Introduction](#)



[Gallery  
The Wilson](#)

[Dimensions](#)

[Floorplan](#)

[Specification](#)



*Beautiful views across the exclusive Sundridge Park Golf Club and the city beyond*

**Introduction**



**Gallery**  
The Mansion

**Gallery**  
The Wilson

**Dimensions**

**Floorplan**

**Specification**

The Mansion's communal areas have been meticulously restored to showcase their grandeur and intricacy

The Mansion's entrance hall



Impressive domed ceilings



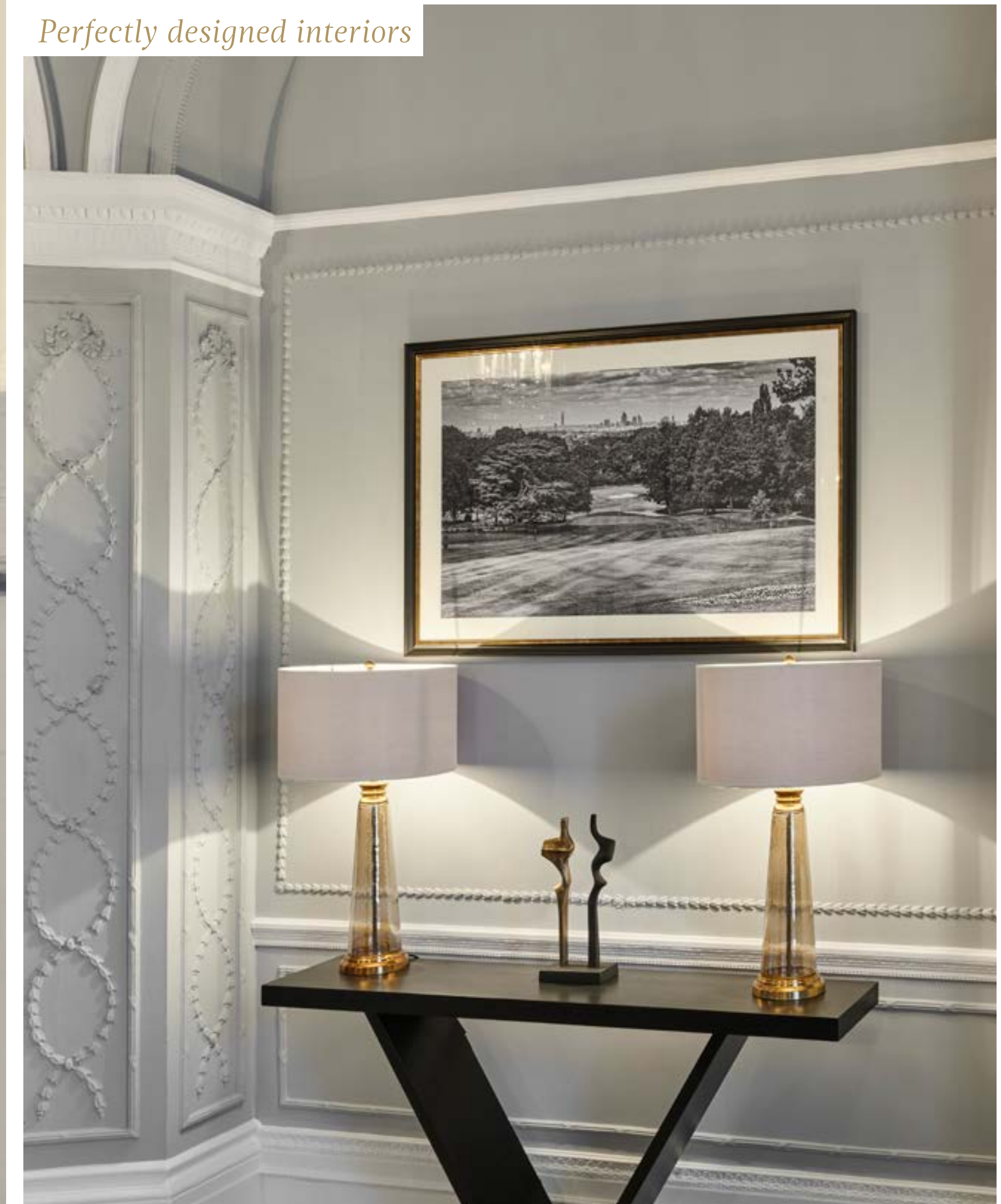
Restored feature plasterwork



Beautiful cornicing



Perfectly designed interiors



Large and exquisite original doors



## Gallery – The Wilson

Discover impressive features and more



*The Wilson's beautiful handmade Ladbury kitchen with breakfast bar and open plan dining and living area*



*Master bedroom with access to the private terrace*

[Introduction](#)

[Gallery  
The Mansion](#)



[Gallery  
The Wilson](#)

[Dimensions](#)

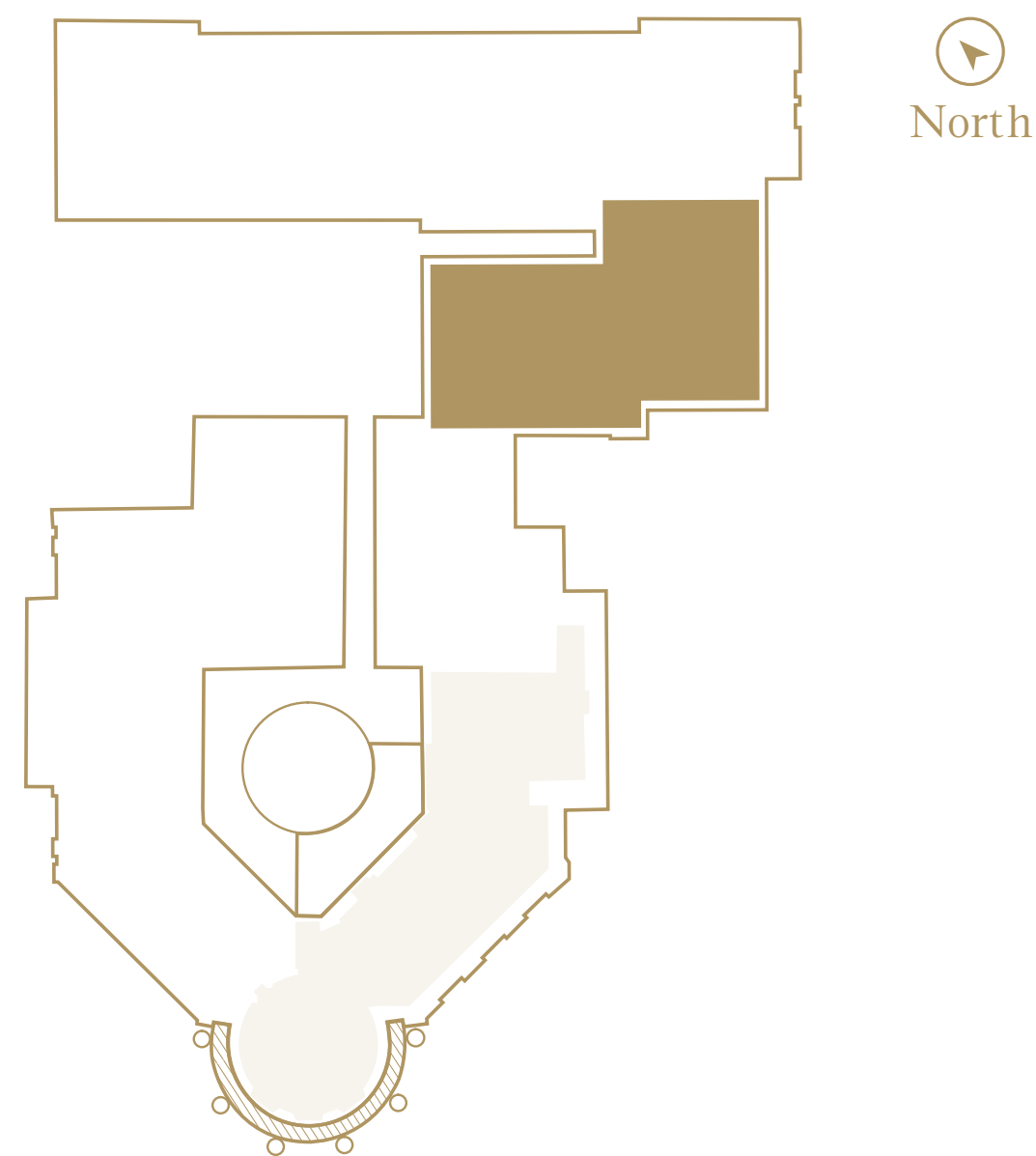
[Floorplan](#)

[Specification](#)



# Dimensions

Total NSA 3,522 sq ft / 327 sq m



Kitchen / Sitting / Dining Room	8.8m x 5.3m	29'1" x 17'6"
Master Bedroom	4.3m x 4.1m	14'2" x 13'7"
Bedroom 2	4.9m x 4.1m	16'4" x 13'9"
Terrace	6.3m x 6.3m	20'8" x 20'8"

Beautiful handmade and painted  
ladbury kitchen with stone work-tops,  
Siemens appliances and informal  
breakfast bar

The second double bedroom is very  
spacious and boasts views onto the  
tranquil courtyard

Slanted velux windows,  
flooding the space with light



Luxurious en suite bathrooms to both  
bedrooms with separate showers and  
baths, featuring quality fittings  
from Villeroy & Boch and Hansgrohe

Raised decking area

A wonderful south-facing dual-aspect  
terrace framed by the buildings  
original baluster and views of the  
restored gardens, woodland and  
golf course beyond

Master bedroom features direct  
access to the private terrace



## Specification

Fully-inclusive and bespoke design, with elegant and luxurious living in mind



### KITCHEN

- Bespoke, hand painted shaker style kitchen by Ladbury
- Stone worktops with matching splashback and upstand
- Integrated Siemens appliances:
  - Single oven
  - Combi microwave
  - Dishwasher
  - Fridge and freezer
- Ceramic induction hob
  - Wine cooler
  - Warming drawer



### BATHROOMS

- Sanitaryware from Villeroy & Boch and Hansgrohe
- Traditional style brassware from Crosswater
- Porcelain floor tiles and contemporary glazed brick bond wall tiles
- Bespoke free-standing basin furniture featuring quartz worktops
  - Heated towel rails
  - Fitted mirrors



### FLOOR FINISHES

- Engineered oak flooring
- Modern Italian and porcelain floor tiles
- Luxurious tufted cut pile carpets

### HEATING

- Gas underfloor heating controlled by programmable room thermostats
- Cast iron radiators to specific rooms, supplemented by underfloor heating
  - Individual gas boiler



## Specification

Fully-inclusive and bespoke design, with elegant and luxurious living in mind



### IRONMONGERY & DOORS

- Where new doors are required they are bespoke to match the original, or hand painted and of a traditional four-panel design



### ELECTRICAL

- Pendant fittings or LED down-lighters to kitchen and bedrooms
  - BT television, phone and hyperoptic internet (available by separate contract with provider)
  - Communal aerial and satellite dish
  - LED down-lighters and chrome shaver sockets to bathrooms
  - TV points to all bedrooms

### SAFETY & SECURITY

- Intruder alarms
- Audio-visual entry to main access points controlled either via an app on your smartphone or TV
- Mains operated heat and smoke detectors



### COMMUNAL AREAS

- Beautifully designed communal spaces that have been decorated to complement the history of the building and feature sumptuous furniture and stylish artwork

### LANDSCAPING

- Elegant formal landscaping featuring English roses, lavender, box hedges and beautiful salvia
- Original stone steps and terraces to specific locations
  - Wonderful Gentlemen's walk in private woodland





**The Mansion at Sundridge Park, London BR1 3FZ  
020 3369 2222 ~ [www.cityandcountry.co.uk](http://www.cityandcountry.co.uk)**

The information in this document is intended as a guide only and is subject to change without prior notice. Accordingly, due to the City & Country policy of continual improvement, the finished product may vary from the information provided and City & Country reserves the right to amend the specification. All dimensions stated are approximate only with maximum dimensions and may alter through the construction phase and with interior finishes. You are therefore advised not to order any goods which depend upon accurate dimensions before carrying out a check measure within your reserved property.