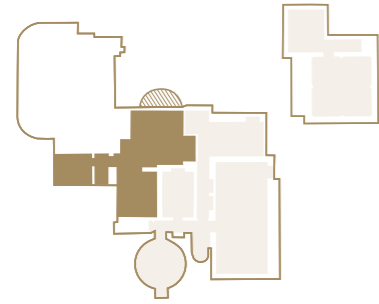
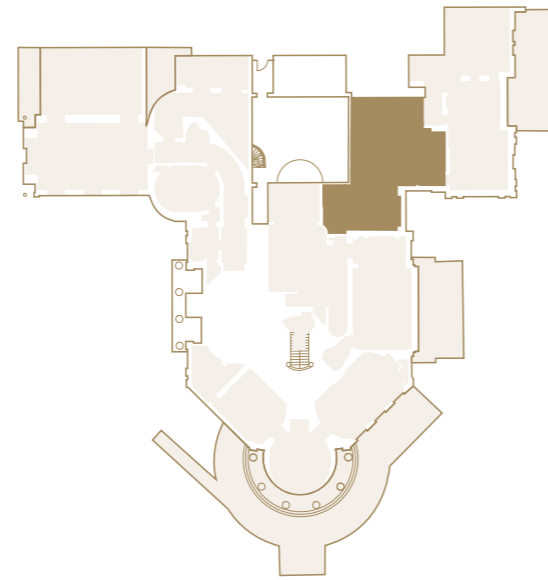


LOWER GROUND FLOOR LOCATOR



GROUND FLOOR LOCATOR



DIMENSIONS

Total NSA 1,950 sq ft / 181 sq m

Ground Floor	Kitchen	5.2m x 3.6m	17'1" x 11'9"
	Dining Room	5.7m x 3m	18'10" x 10'
	Drawing Room	5.6m x 4m	18'5" x 13'2"
	Master Bedroom	4.8m x 2.9m	15'9" x 9'6"
Lower Ground Floor	Bedroom 2	5.4m x 2.5m	17'10" x 8'4"
	Cinema Room	4.6m x 4.1m	15'2" x 13'7"
	Courtyard	4.6m x 1.9m	15'1" x 6'5"

the
ROCHESTER
floorplan



PLOT NO.3 THE MANSION



The Mansion at Sundridge Park, Bromley, London BR1 3FZ

020 3369 2222 ~ www.cityandcountry.co.uk

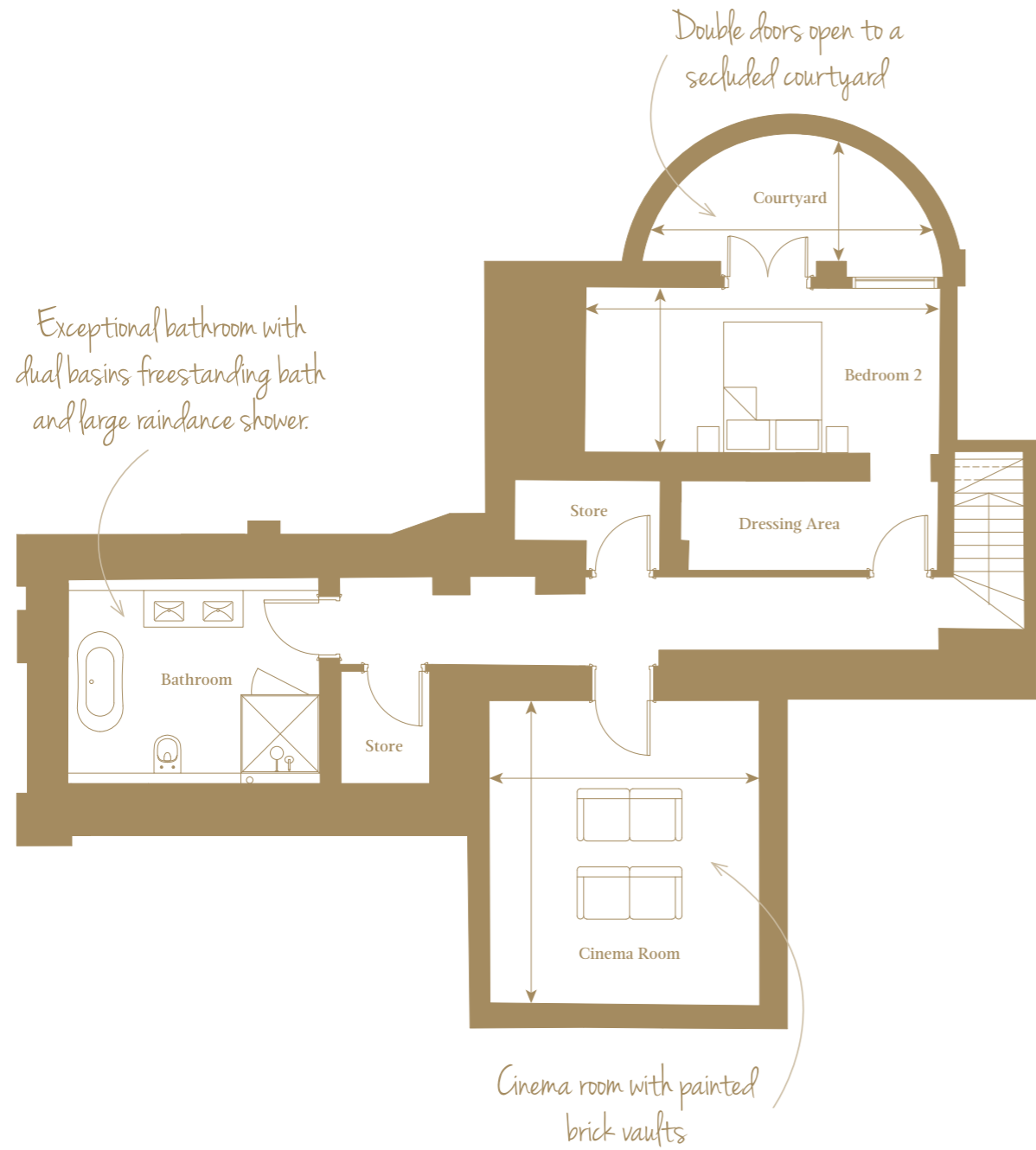
The information in this document is intended as a guide only and is subject to change without prior notice. Accordingly, due to the City & Country policy of continual improvement, the finished product may vary from the information provided and City & Country reserves the right to amend the specification. All dimensions stated are approximate only with maximum dimensions and may alter through the construction phase and with interior finishes. You are therefore advised not to order any goods which depend upon accurate dimensions before carrying out a check measure within your reserved property.

CITY & COUNTRY

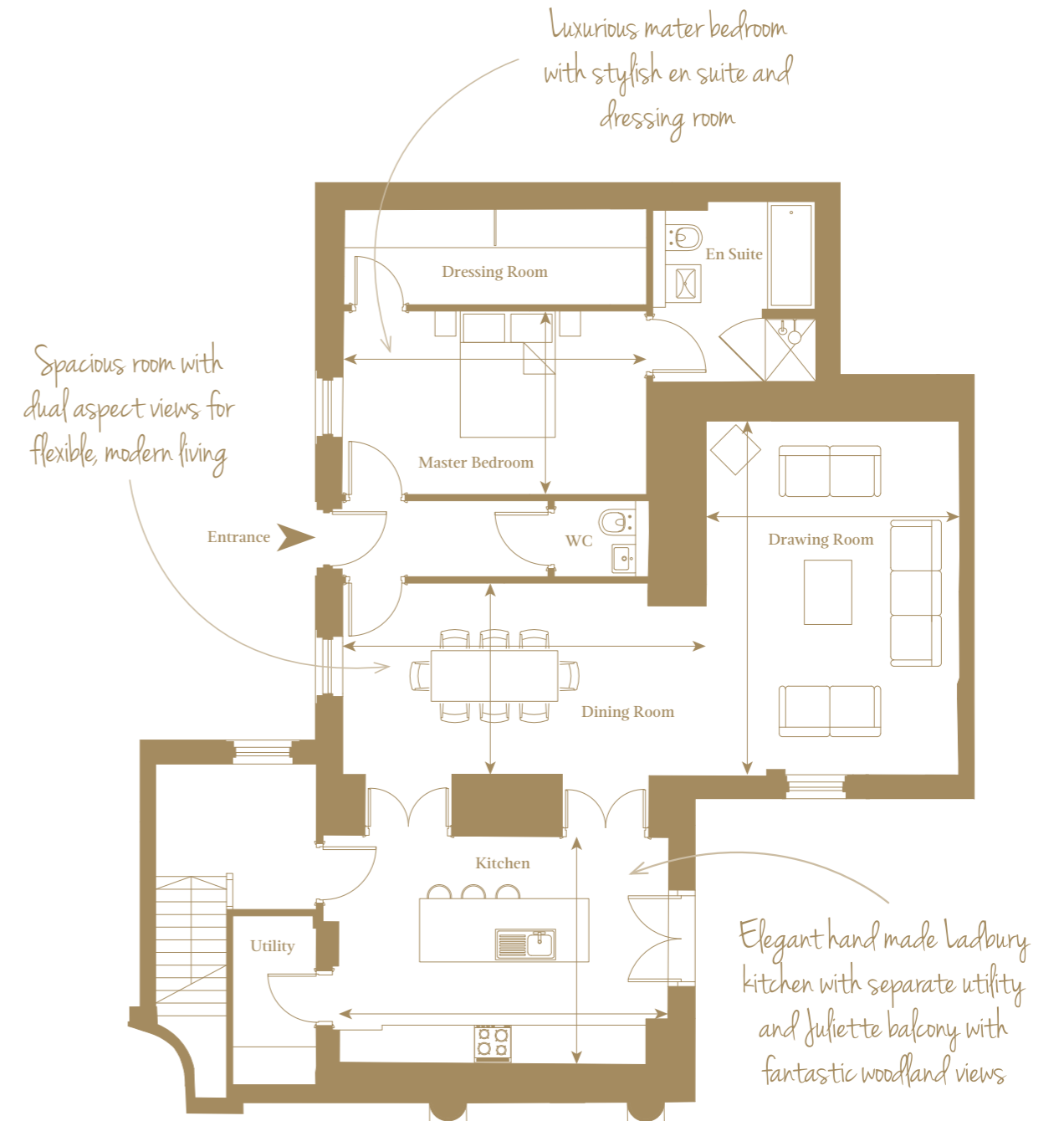
THE ROCHESTER

TWO BEDROOM, GROUND FLOOR, TWO STOREY APARTMENT

With its own private access from The Mansion's internal courtyard, The Rochester is a two storey, two bedroom apartment with extensive, flexible living space with views of the tranquil courtyard and the east lawn. At ground level there is an outstanding master suite, beautifully spacious drawing/dining room and well appointed separate kitchen. At lower ground level the property boasts characterful exposed original brickwork to the sizeable cinema room. There is also a charming second bedroom with semi-circular courtyard.



LOWER GROUND



GROUND FLOOR