



*the*  
REPTON  
*floorplan brochure*

---





## Introduction



### THE REPTON

NAMED AFTER THE GREAT EIGHTEENTH CENTURY LANDSCAPE ARCHITECT HUMPHRY REPTON, IT INCLUDES SOME OF THE MANSION'S MOST EXCEPTIONAL ORIGINAL FEATURES AND SPACES.

The Repton includes many impressive features of the original building and benefits from two private terraces. Extremely spacious at over 3,500 square feet, this unique apartment is arranged over two floors, and incorporates The Mansion's original solid timber, circular wine cellar. The exceptional drawing room, overlooking one of this unique apartment's private terraces and the east lawn, boasts an array of original features including restored shutters and windows, beautiful ceilings with ornate plasterwork, restored wall panelling and an impressive oak fireplace with decorative surround.





# Gallery – The Mansion

Discover luxury that transcends the ordinary







*The Mansion's impressive Nash colonades*

[Introduction](#)



[Gallery  
The Repton](#)

[Dimensions](#)

[Ground Floor](#)

[Lower Ground Floor](#)

[Specification](#)





*Beautiful views across the exclusive Sundridge Park Golf Club and the city beyond*

**Introduction**



**Gallery  
The Repton**

**Dimensions**

**Ground Floor**

**Lower Ground Floor**

**Specification**



The Mansion's communal areas have been meticulously restored to showcase their grandeur and intricacy.

The Mansion's entrance hall



Impressive domed ceilings



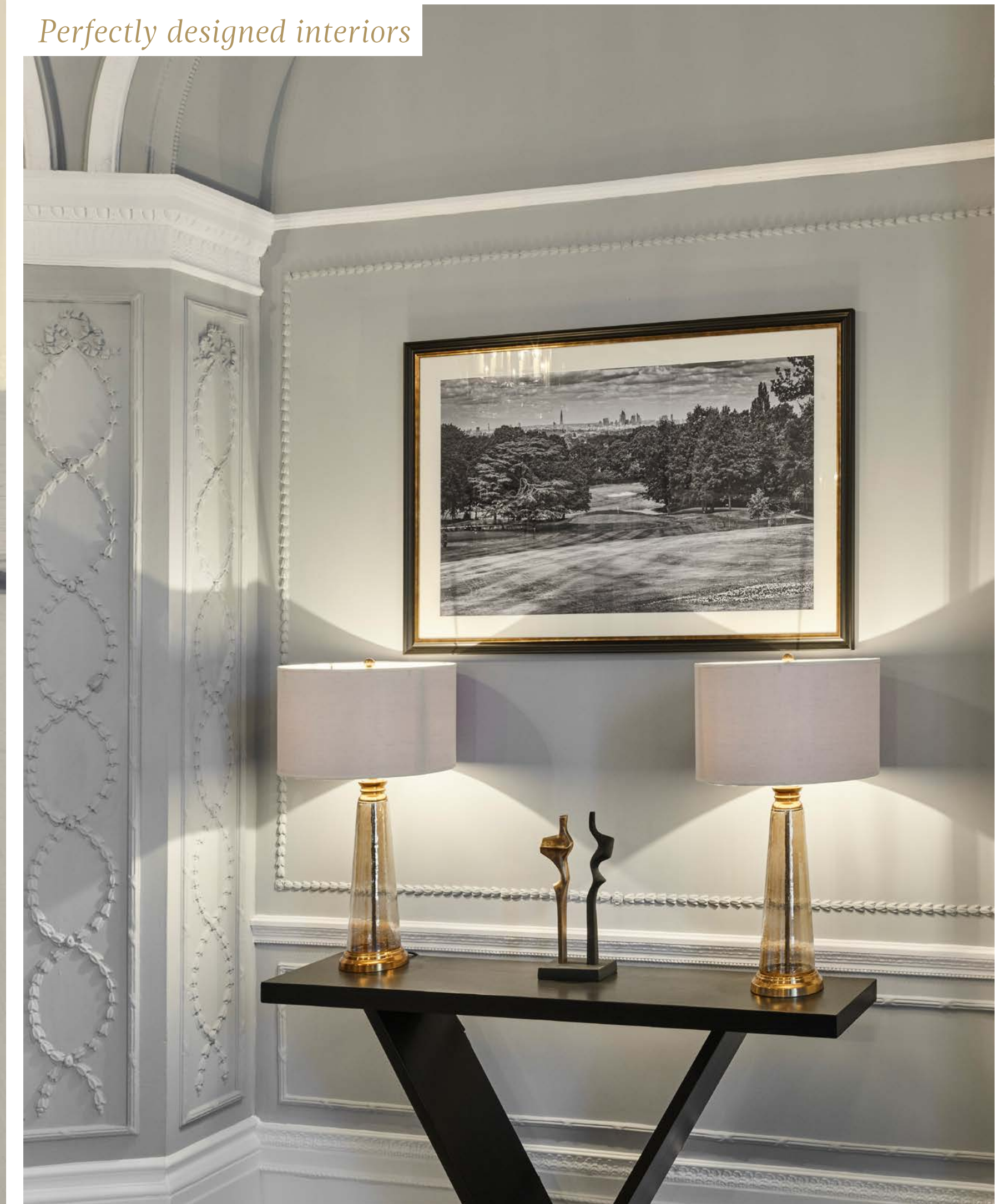
Restored feature plasterwork



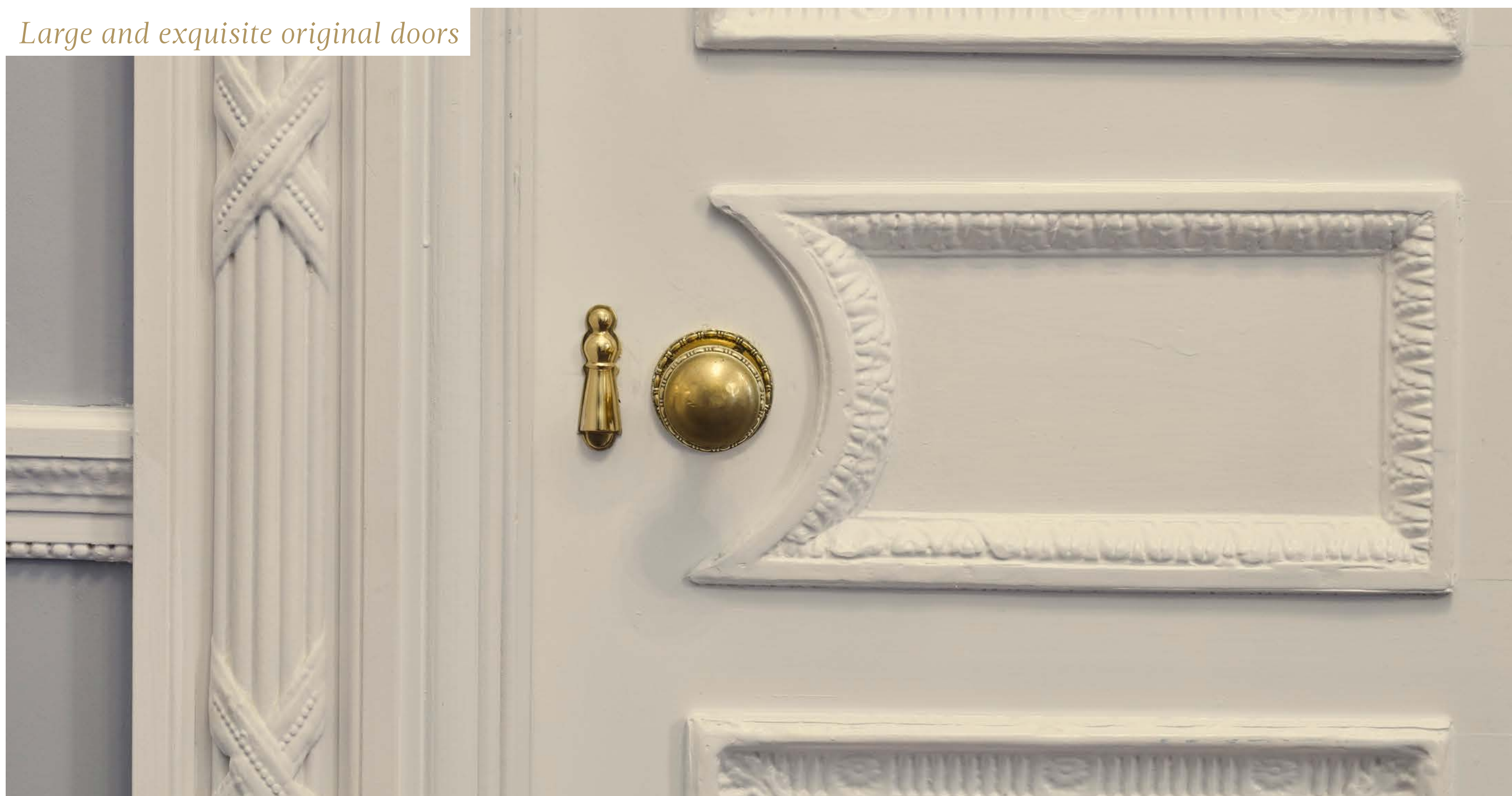
Beautiful cornicing



Perfectly designed interiors



Large and exquisite original doors





## Gallery – The Repton

Discover impressive original features and more.



*The Repton features The Mansion's original drawing room*

[Introduction](#)

[Gallery  
The Mansion](#)



[Dimensions](#)

[Ground Floor](#)

[Lower Ground Floor](#)

[Specification](#)





*The master suite - perfectly private with adjoining walk-in wardrobe, en suite and private terrace*

[Introduction](#)

[Gallery  
The Mansion](#)



[Dimensions](#)

[Ground Floor](#)

[Lower Ground Floor](#)

[Specification](#)





*Impressive kitchen and dining area, with bespoke shaker style Ladbury kitchen*

[Introduction](#)

[Gallery  
The Mansion](#)



[Dimensions](#)

[Ground Floor](#)

[Lower Ground Floor](#)

[Specification](#)



Restored original fireplace with oak surround



Original glazed doors framing views across the east lawn



The Repton incorporates The Mansion's original wine cellar





Restored stone staircase



Extensive utility room and pantry/store



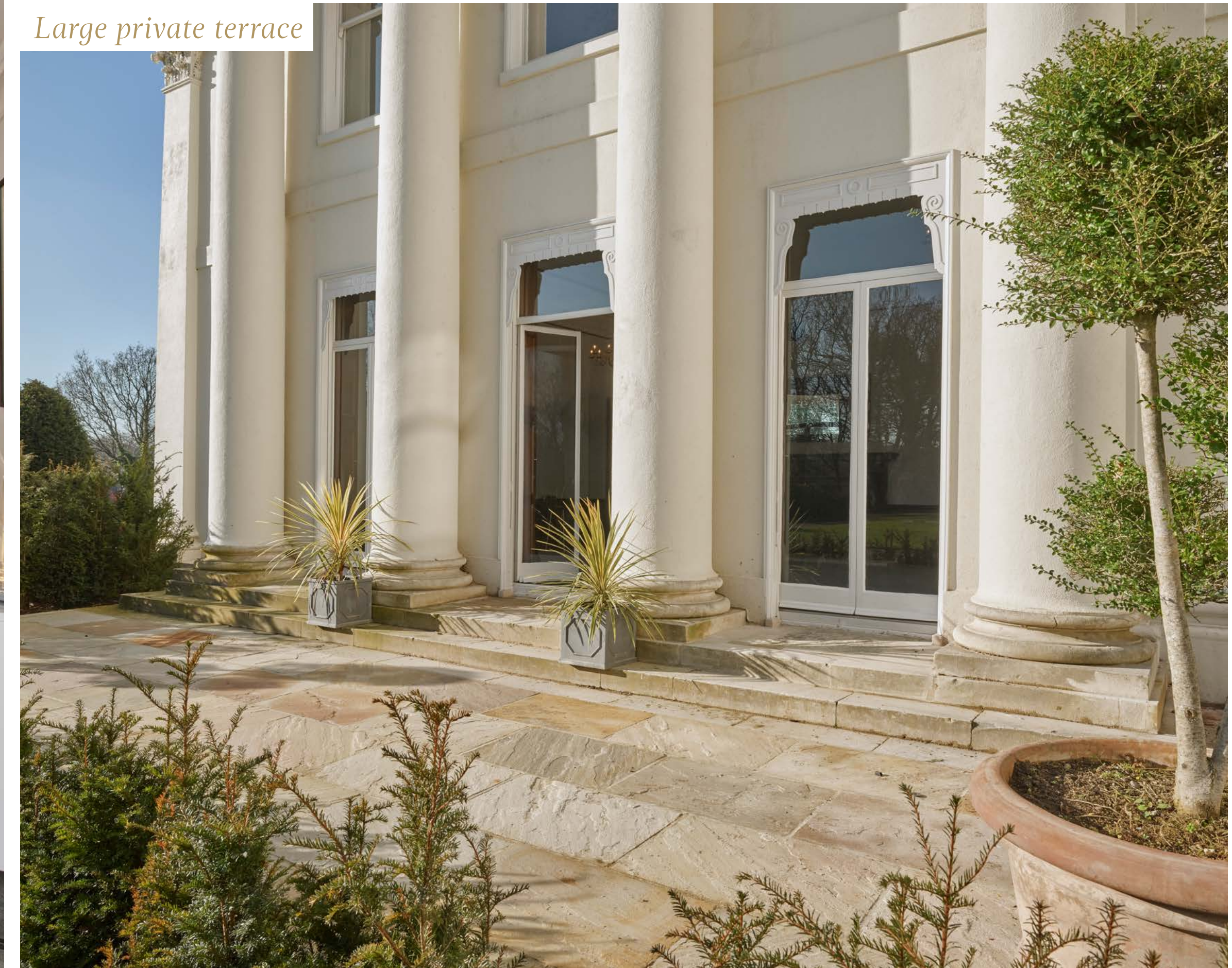
En suite to master bedroom



Spacious guest suite



Large private terrace





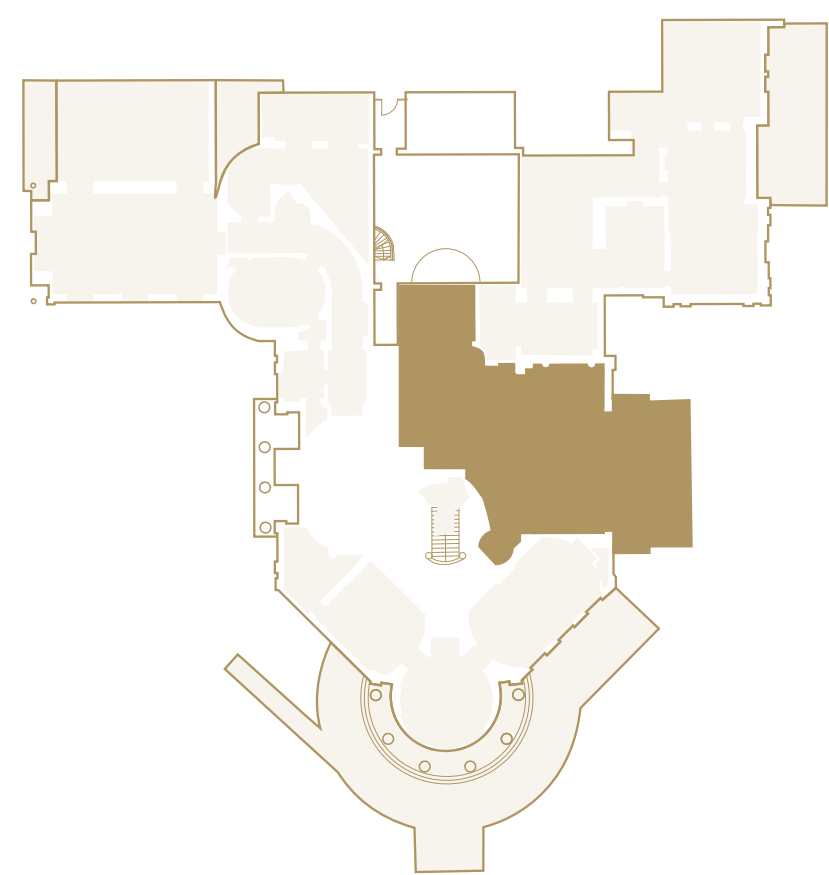
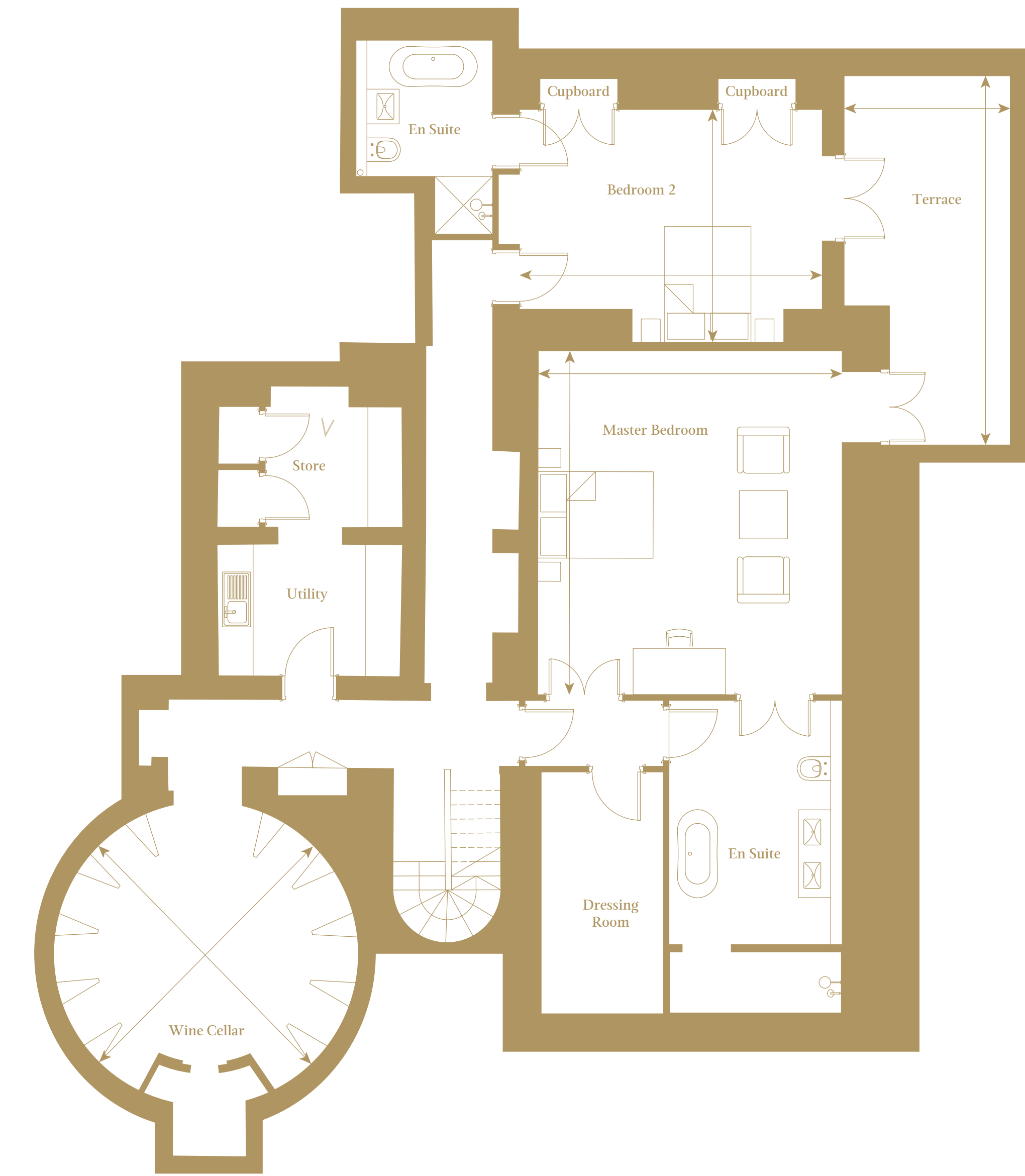
# Dimensions

Total NSA 3,522 sq ft / 327 sq m

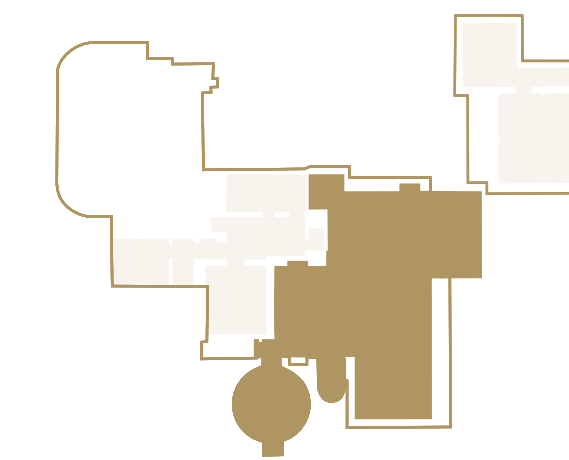
## GROUND FLOOR



## LOWER GROUND FLOOR



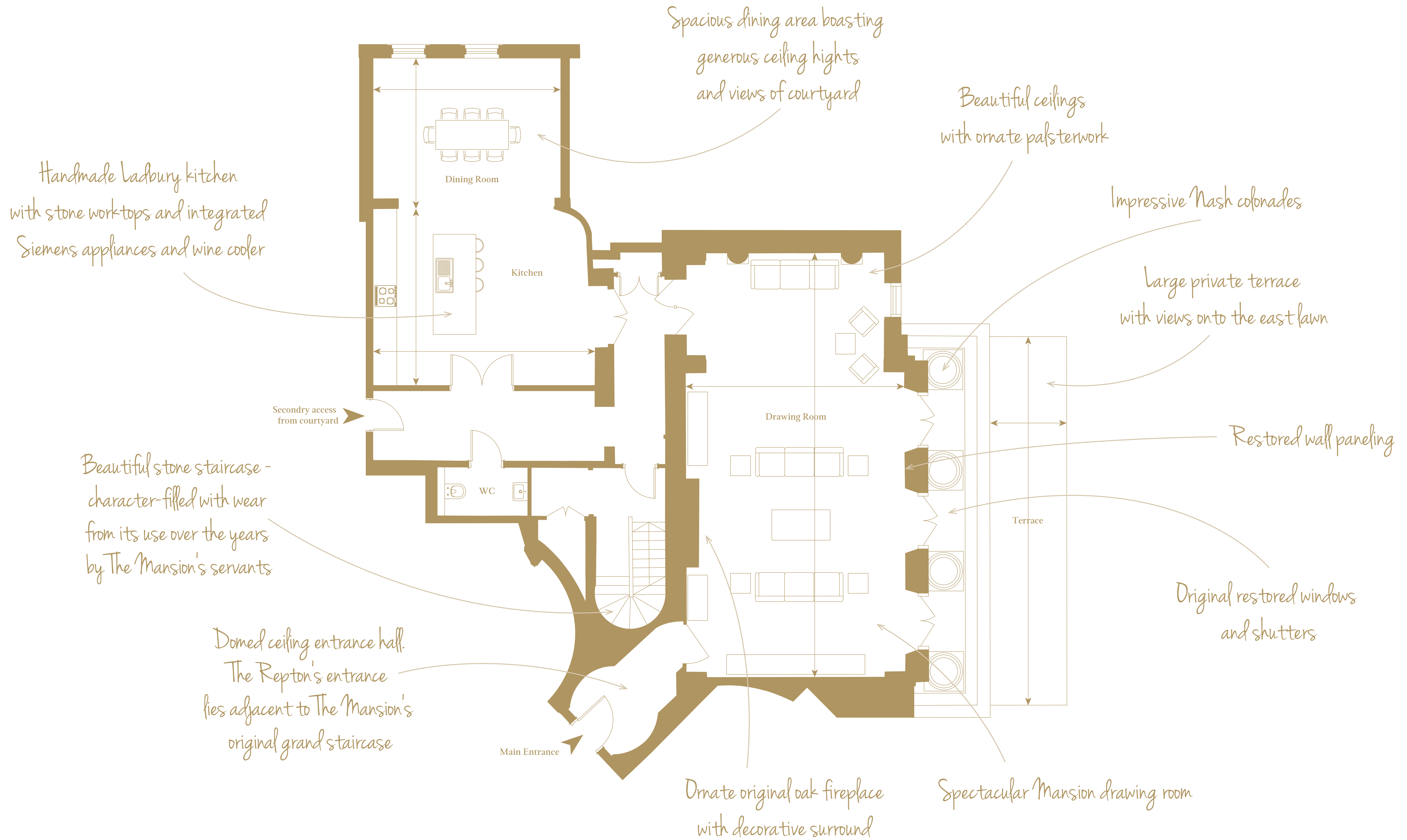
Kitchen	6.1m x 4.8m	20' x 15'11"
Dining Room	5.1m x 4.1m	16'11" x 13'7"
Drawing Room	11.6m x 6m	38'3" x 19'9"
Terrace	10m x 2.4m	32'10" x 7'10"



Master Bedroom	5.9m x 5.3m	19'6" x 17'3"
Second Bedroom	2 5.2m x 4m	17'2" x 13'3"
Wine Cellar	5.2m x 5.2m	17'2" x 17'2"
Terrace	6.4m x 2.9m	21' x 9'5"

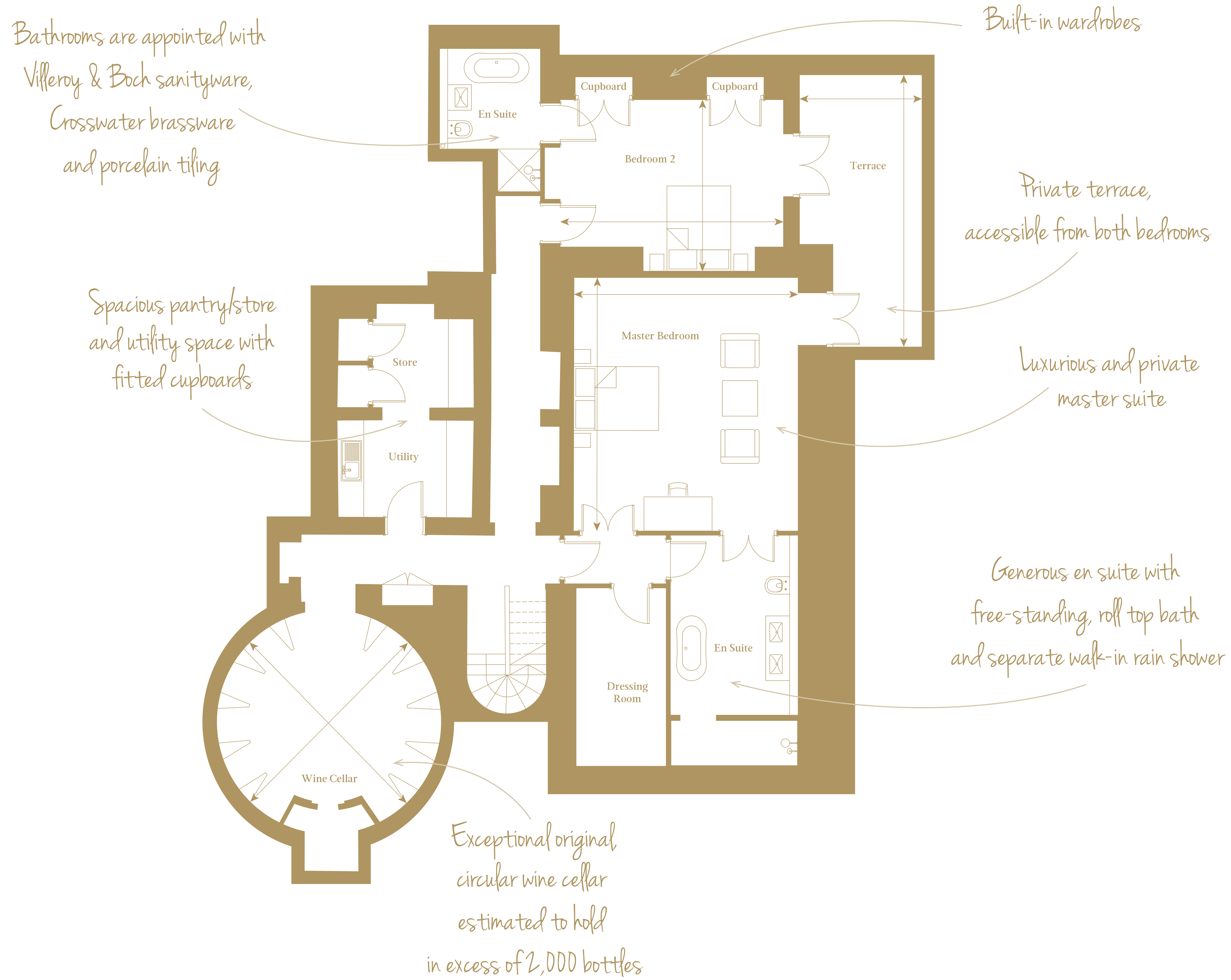


# Ground Floor





# Lower Ground Floor





## Specification

Fully-inclusive and bespoke design, with elegant and luxurious living in mind



### KITCHENS

- Bespoke, hand painted shaker style kitchens by Ladbury
- Stone worktops with matching splashback and upstand
- Integrated Siemens appliances:
  - Single oven
  - Combi microwave
  - Dishwasher
  - Fridge and freezer
- Ceramic induction hob
  - Wine cooler
  - Warming drawer



### BATHROOMS

- Sanitaryware from Villeroy & Boch
  - Traditional style brassware from Crosswater
  - Free-standing roll top baths and rain showers
- Porcelain floor tiles and contemporary glazed brick bond wall tiles
- Bespoke free-standing basin furniture featuring quartz worktops
  - Heated towel rails
  - Fitted mirrors



### FLOOR FINISHES

- Engineered oak flooring
- Modern Italian and porcelain floor tiles
  - Luxurious tufted cut pile carpets

### HEATING

- Gas underfloor heating controlled by programmable room thermostats
- Cast iron radiators to specific rooms, supplemented by underfloor heating
  - Individual gas boiler





## Specification

Fully-inclusive and bespoke design, with elegant and luxurious living in mind



### IRONMONGERY & DOORS

- Original doors and ironmongery retained where possible
- Where new doors are required they are bespoke to match the original, or hand painted and of a traditional four-panel design



### ELECTRICAL

- Pendant fittings or LED down-lighters to kitchen and bedrooms. Original light fittings in the living area - The Mansion's original drawing room
- BT television, phone and hyperoptic internet (available by separate contract with provider)
- Communal aerial and satellite dish
- LED down-lighters and chrome shaver sockets to bathrooms
- TV points to all bedrooms

### SAFETY & SECURITY

- Intruder alarms
- Audio-visual entry to main access points controlled either via an app on your smartphone or TV
- Mains operated heat and smoke detectors



### COMMUNAL AREAS

- Beautifully designed communal spaces that have been decorated to complement the history of the building and feature sumptuous furniture and stylish artwork

### LANDSCAPING

- Elegant formal landscaping featuring English roses, lavender, box hedges and beautiful salvia
- Original stone steps and terraces to specific locations
- Wonderful Gentlemen's walk in private woodland







**The Mansion at Sundridge Park, London BR1 3FZ  
020 3369 2222 ~ [www.cityandcountry.co.uk](http://www.cityandcountry.co.uk)**

The information in this document is intended as a guide only and is subject to change without prior notice. Accordingly, due to the City & Country policy of continual improvement, the finished product may vary from the information provided and City & Country reserves the right to amend the specification. All dimensions stated are approximate only with maximum dimensions and may alter through the construction phase and with interior finishes. You are therefore advised not to order any goods which depend upon accurate dimensions before carrying out a check measure within your reserved property.