



# THE GENERAL BRISTOL

## Floorplan – Plot 04-17

3 bedroom apartment

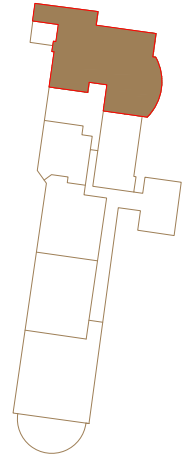
Second and Mezzanine Floor

Total area 1995sq ft (185.4sq m)

Living/Dining	31ft 10in x 17ft 1in	(9.7m x 5.2m)
Kitchen	13ft 5in x 7ft 7in	(4.1m x 2.3m)
Bedroom 1	11ft 10in x 13ft 10in	(3.5m x 4.2m)
Bedroom 2	8ft 6in x 13ft 5in	(2.6m x 4.1m)
Bedroom 3	10ft 6in x 13ft 10in	(3.2m x 4.2m)



Second Floor Mezzanine



Second Floor

01179 255 333  
sales@cityandcountry.co.uk  
www.cityandcountry.co.uk

CITY & COUNTRY