



THE GENERAL BRISTOL

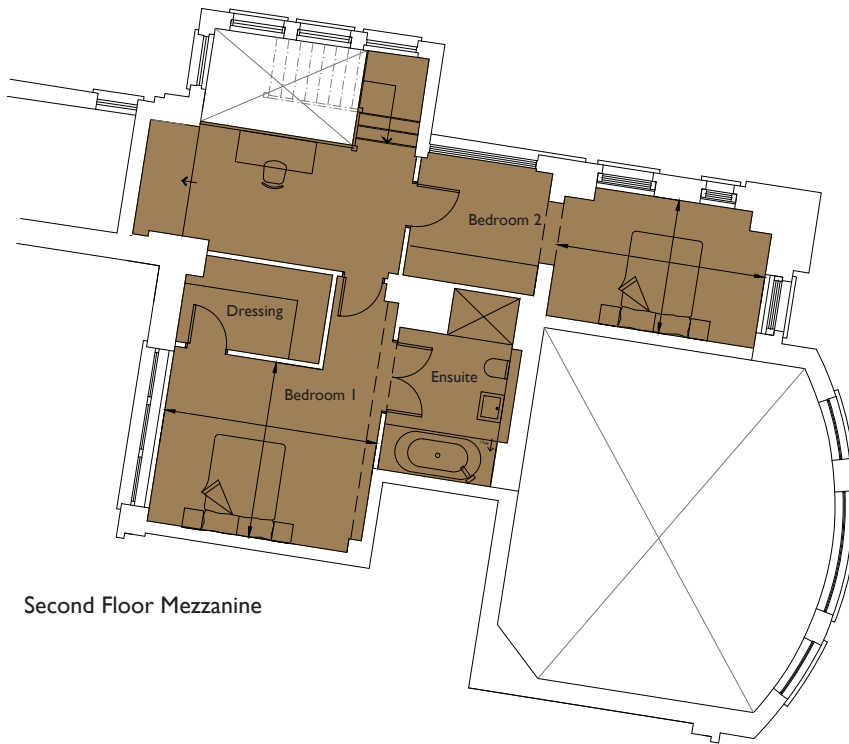
Floorplan – Plot 04-17

3 bedroom apartment

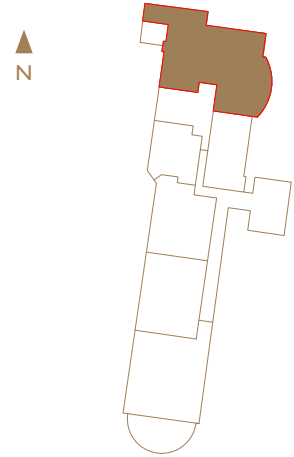
Second and Mezzanine Floor

Total area 2018sq ft (187.5sq m)

Living/Dining	31ft 10in x 17ft 1in	(9.7m x 5.2m)
Kitchen	13ft 5in x 7ft 7in	(4.1m x 2.3m)
Bedroom 1	13ft 9in x 11ft 6in	(4.2m x 3.5m)
Bedroom 2	13ft 5in x 8ft 6in	(4.1m x 2.6m)
Bedroom 3	13ft 9in x 10ft 6in	(4.2m x 3.2m)



Second Floor Mezzanine



 Restricted headroom, please ask for details.



Second Floor

01179 255 333
sales@cityandcountry.co.uk
www.cityandcountry.co.uk

