

Floorplan - Plot 10-18

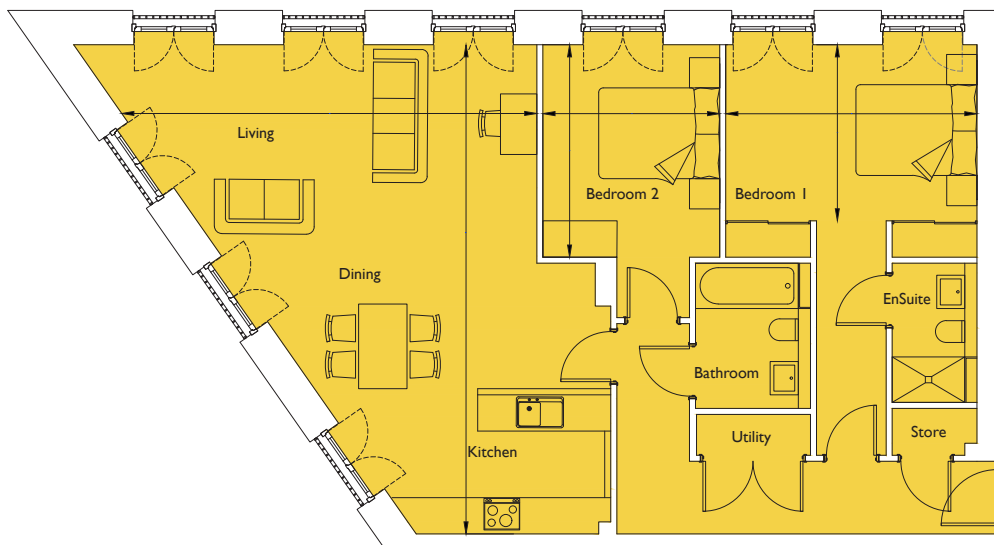
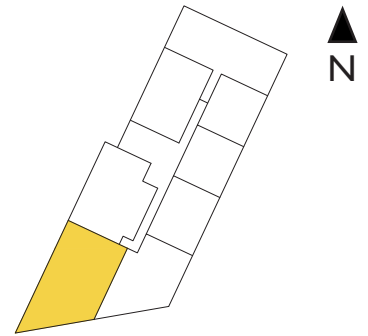
2 Bedroom Apartment
First Floor

Total area 1084 sq ft (100.7 sq m)

**THE
NEW
YARD**

THE GENERAL
BRISTOL

Living/Kitchen/Dining	22'6" x 26'6"	(6.90m x 8.10m)
Bedroom 1	13'7" x 9'5"	(4.20m x 2.90m)
Bedroom 2	9'5" x 11'6"	(3.90m x 3.50m)



0117 92 55 333

e: thegeneral@cityandcountry.co.uk | w: www.cityandcountry.co.uk

CITY & COUNTRY

**CONSUMER
CODE FOR
HOME BUILDERS**

www.consumercode.co.uk

The information in this document is intended as a guide only and is subject to change without prior notice. Accordingly, due to the City & Country policy of continual improvement, the finished product may vary from the information provided and City & Country reserves the right to amend the specification. All dimensions stated are approximate only with maximum dimensions and may alter through the construction phase and with interior finishes. You are therefore advised not to order any carpets, appliances or other goods which depend upon accurate dimensions before carrying out a check measure within your reserved property. October 2017.