



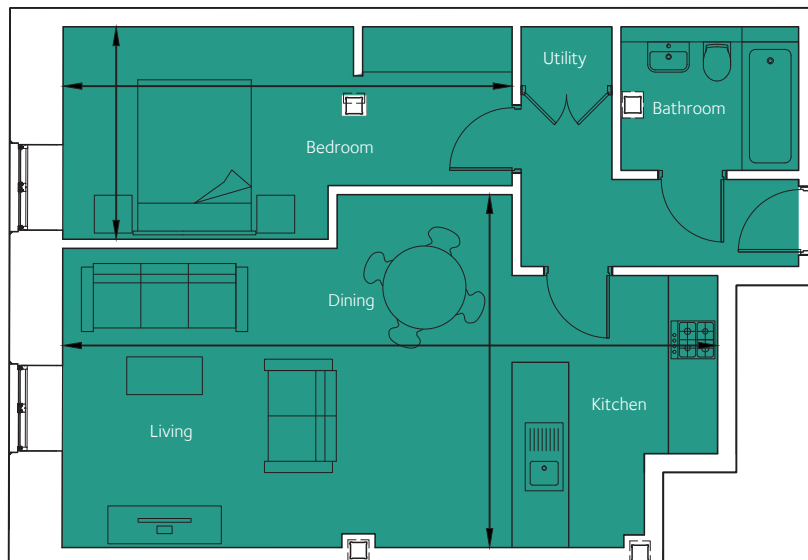
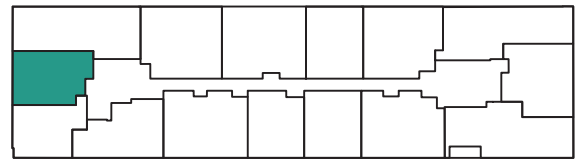
FACTORY N01
BRISTOL

Floorplan - Plot C108

1 Bedroom Apartment
First Floor - Consort House
Total area 665 sq ft (61.8 sq m)

Living/Kitchen/Dining	28' 7" x 15' 5"	(8.70m x 4.70m)
Bedroom	19' 4" x 9' 2"	(5.90m x 2.80m)

NOT TO SCALE



CITY & COUNTRY

01174 535 155 | factorynumber1@cityandcountry.co.uk | www.cityandcountry.co.uk

The information in this document is intended as a guide only and is subject to change without prior notice. Accordingly, due to the City & Country policy of continual improvement, the finished product may vary from the information provided and City & Country reserves the right to amend the specification. All dimensions stated are approximate only with maximum dimensions and may alter through the construction phase and with interior finishes. You are therefore advised not to order any carpets, appliances or other goods which depend upon accurate dimensions before carrying out a check measure within your reserved property. May 2019.