

THE
PLAYFAIR
AT DONALDSON'S



SIGNATURE
COLLECTION

Apartment S04

Three/four bedroom penthouse apartment

CITY & COUNTRY

The information in this document is intended as a guide only and is subject to change without prior notice. Accordingly, due to the City & Country policy of continual improvement, the finished product may vary from the information provided and City & Country reserves the right to amend the specification. Photography shown may be of similar apartments at Donaldson's and is indicative only. All dimensions stated are approximate only with maximum dimensions and may alter through the construction phase and with interior finishes. You are therefore advised not to order any carpets, appliances or other goods which depend upon accurate dimensions before carrying out a check measure within your reserved property.

Three/four bedroom penthouse apartment

SIGNATURE
COLLECTION

Apartment S04

Enjoy breathtaking vistas and beautiful original period features

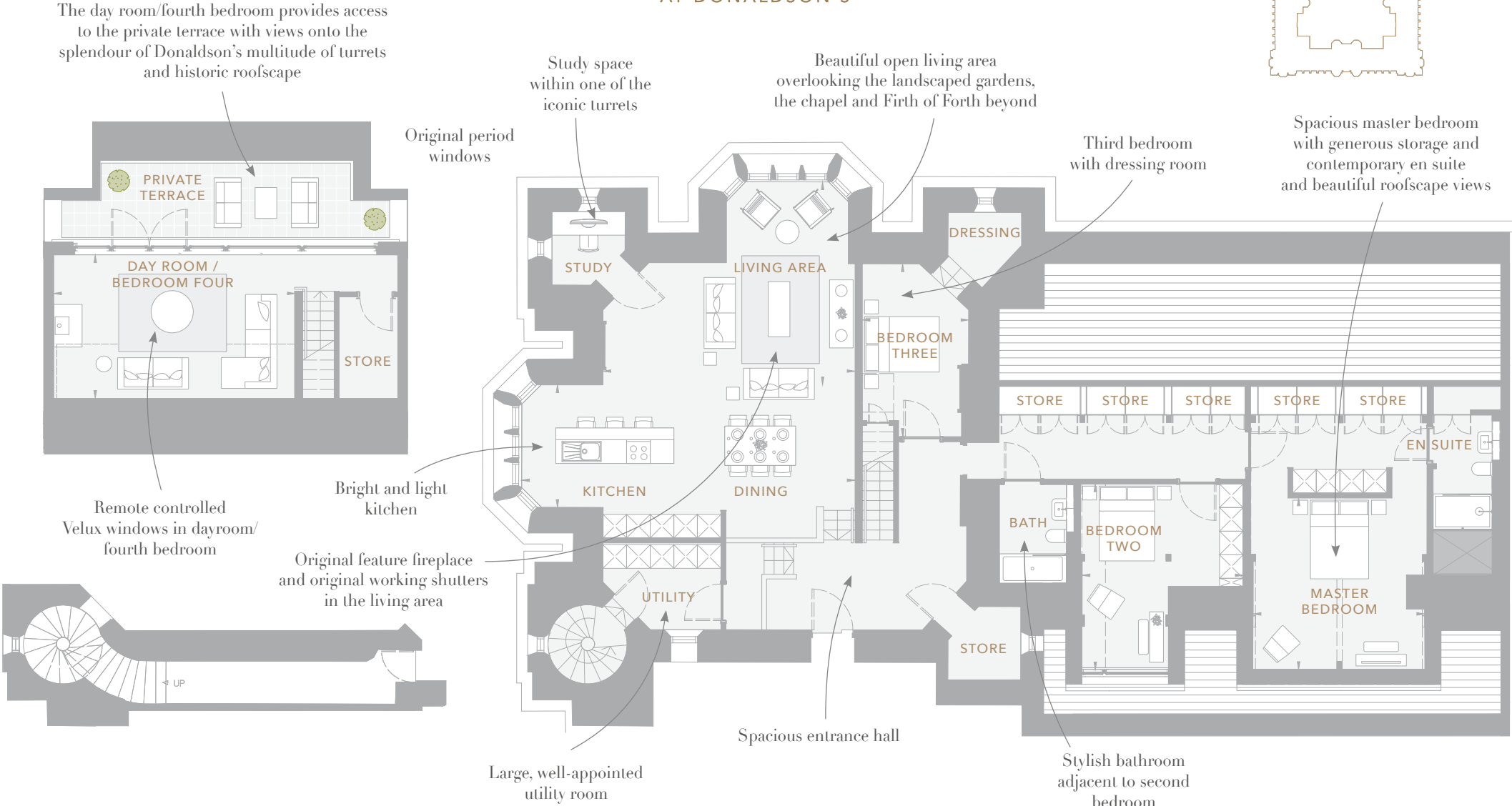
Located on the second floor, this beautiful apartment offers spectacular views across to the Firth of Forth and Donaldson's impeccably restored chapel and landscaped gardens. The large and light-filled living room features the original fireplace and working shutters, and exquisite decorative detailing to its high ceiling. A light and bright open plan kitchen includes an island unit. The fourth bedroom/day room is located on the second floor, opening onto the large and private terrace. Enjoy a quiet study area in one of the apartment's iconic turrets, or go up to a viewing space with panoramic vistas of the city via a stone turreted staircase.

Dimensions

Total NSA 2,510 sq ft (233.2 sq m)

| | | |
|------------------|------------------|-----------------|
| Living | 21' 0" x 16' 11" | (6.41m x 5.16m) |
| Kitchen / Dining | 27' 9" x 10' 3" | (8.47m x 3.12m) |
| Day Room | 20' 6" x 12' 11" | (6.27m x 3.95m) |
| Master Bedroom | 14' 6" x 14' 3" | (4.42m x 4.34m) |
| Bedroom 2 | 15' 5" x 13' 9" | (4.72m x 4.20m) |
| Bedroom 3 | 14' 9" x 8' 10" | (4.50m x 2.70m) |

THE
PLAYFAIR
AT DONALDSON'S



Photography shown may be of similar apartments at Donaldson's and is indicative only