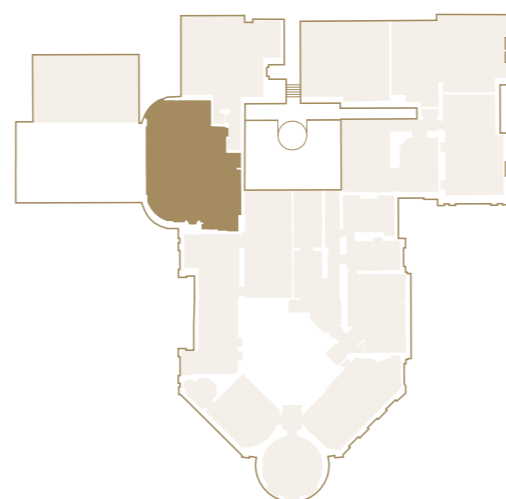
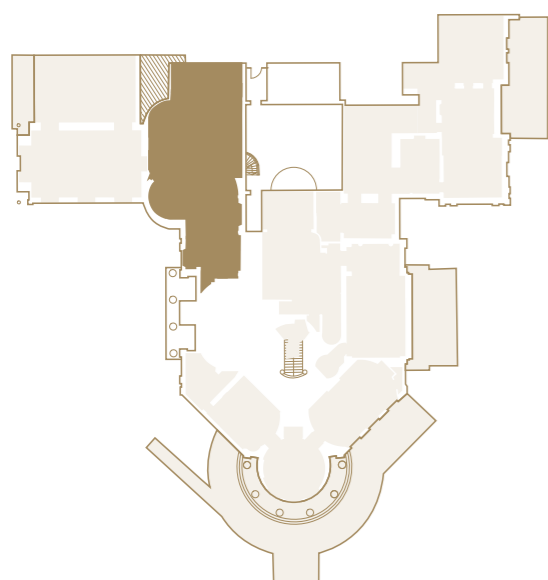


GROUND FLOOR LOCATOR

FIRST FLOOR LOCATOR



DIMENSIONS

Total NSA 2,750 sq ft / 256 sq m

First Floor	Master Bedroom	6.7m x 5.3m	22'2" x 17'5"
	Bedroom 2	6.8 x 2.7	22'3" X 9'
Ground Floor	Kitchen	7.5m x 6.4m	24'9" x 21'
	Dining Room	5.3m x 3.3m	17'8" x 11'
	Drawing Room	6.7m x 4.8m	22' x 15'8"
	Snug	4.6m x 2.8m	15'2" x 9'5"
	Study	3.3m x 2.7m	10'8" x 9'1"
	Terrace	6.8m x 3m	22'4" x 9'10"

the
SCOTT
floorplan



PLOT NO.5 THE MANSION



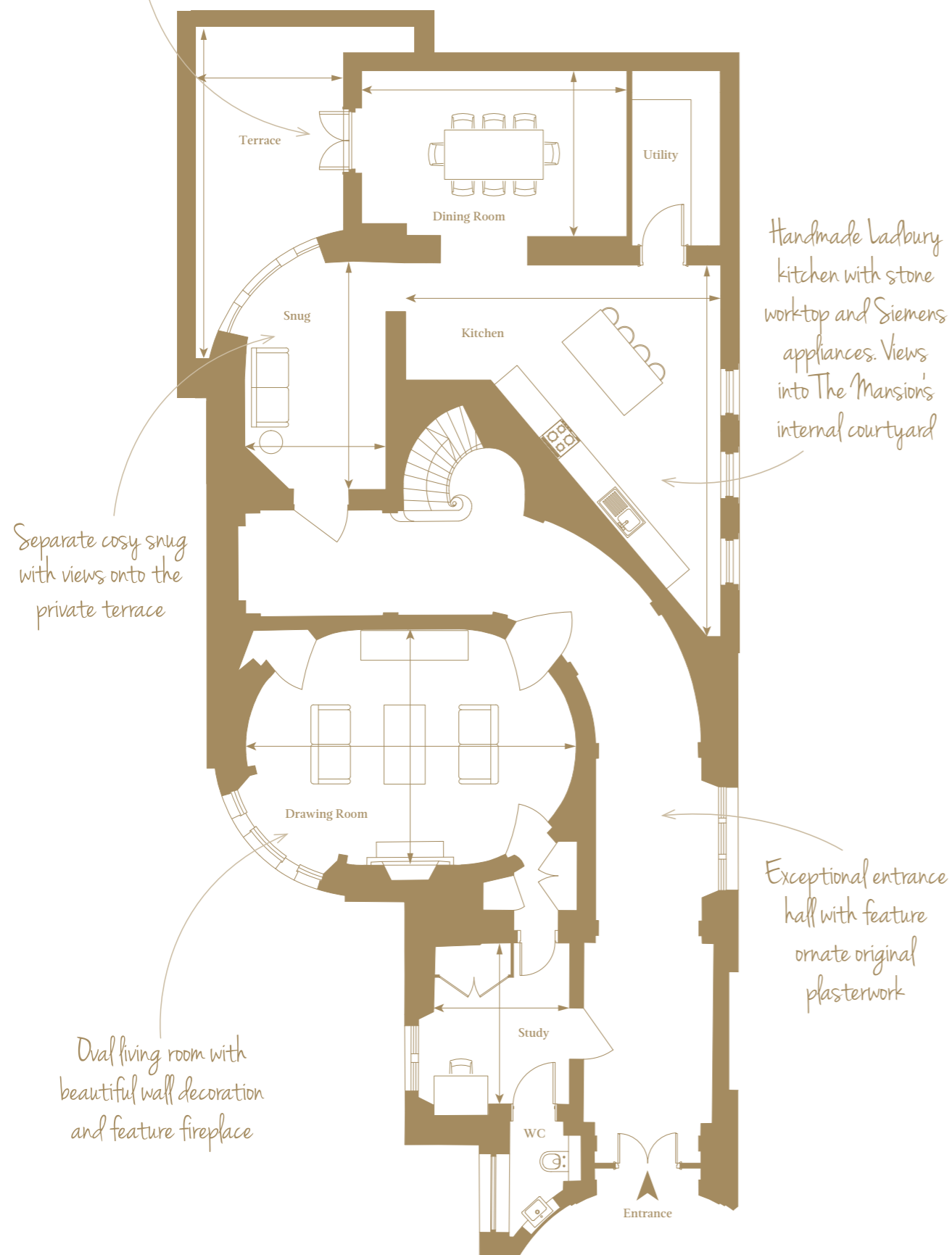
The Mansion at Sundridge Park, Bromley, London BR1 3FZ

020 3369 2222 ~ www.cityandcountry.co.uk

The information in this document is intended as a guide only and is subject to change without prior notice. Accordingly, due to the City & Country policy of continual improvement, the finished product may vary from the information provided and City & Country reserves the right to amend the specification. All dimensions stated are approximate only with maximum dimensions and may alter through the construction phase and with interior finishes. You are therefore advised not to order any goods which depend upon accurate dimensions before carrying out a check measure within your reserved property.

CITY & COUNTRY

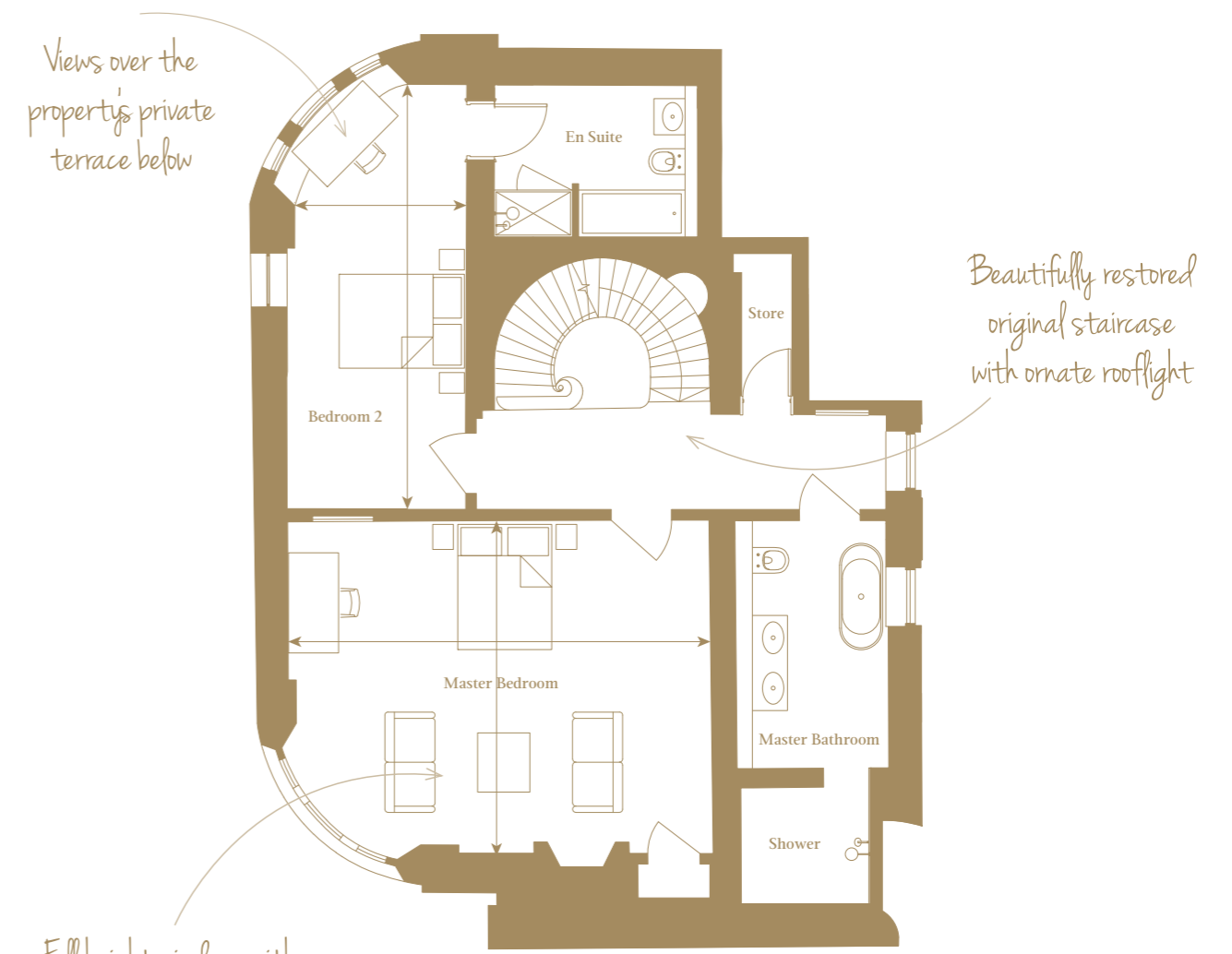
Double doors opening onto the large, private terrace



GROUND FLOOR

THE SCOTT
TWO BEDROOM, GROUND FLOOR, TWO STOREY APARTMENT

The Scott is an exceptional property. Arranged over two floors this apartment boasts many unique original features of The Mansion. The oval living room with its historic mouldings, ceiling cornice and fireplace is comfortable yet very impressive. The unique triangular kitchen and adjacent dining space is vast and provides access to the apartment's private terrace. As you travel up the property's private curved staircase to the bedroom accommodation, you will find the feature ceiling lantern and beautiful wall decorations. The master bedroom is magnificent in terms of size and opulence, whilst next door is its impressive bathroom with twin basins, freestanding bath and walk in rain-dance shower. The second bedroom is an excellent size and benefits from a luxurious en suite.



FIRST FLOOR