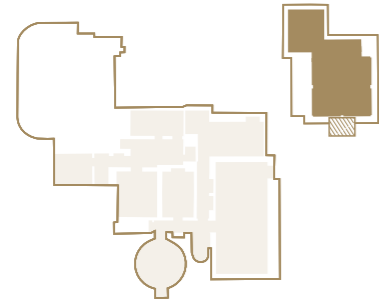
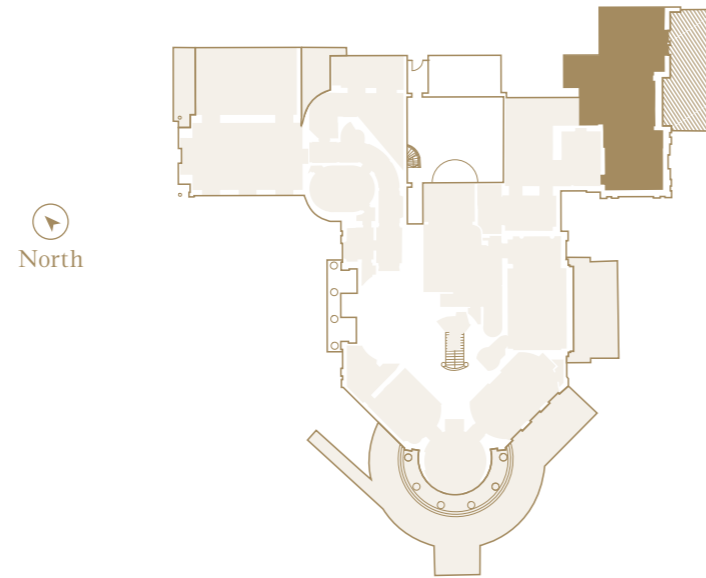


LOWER GROUND FLOOR LOCATOR



GROUND FLOOR LOCATOR



DIMENSIONS

Total NSA 2,028 sq ft / 188 sq m

Ground Floor	Master Bedroom	4.9m x 3.9m	16' x 12'11"
	Bedroom 2	3.2m x 3.1m	10'7" x 10'2"
	Bedroom 3	3.1m x 2.7m	10'2" x 9'
	Drawing Room	6.1m x 5.9m	19'11" x 19'6"
Lower Ground Floor	Kitchen / Dining Room	6.1m x 6.1m	20'2" x 20'2"

the
LIND
floorplan



PLOT NO.4 THE MANSION



The Mansion at Sundridge Park, Bromley, London BR1 3FZ

020 3369 2222 ~ www.cityandcountry.co.uk

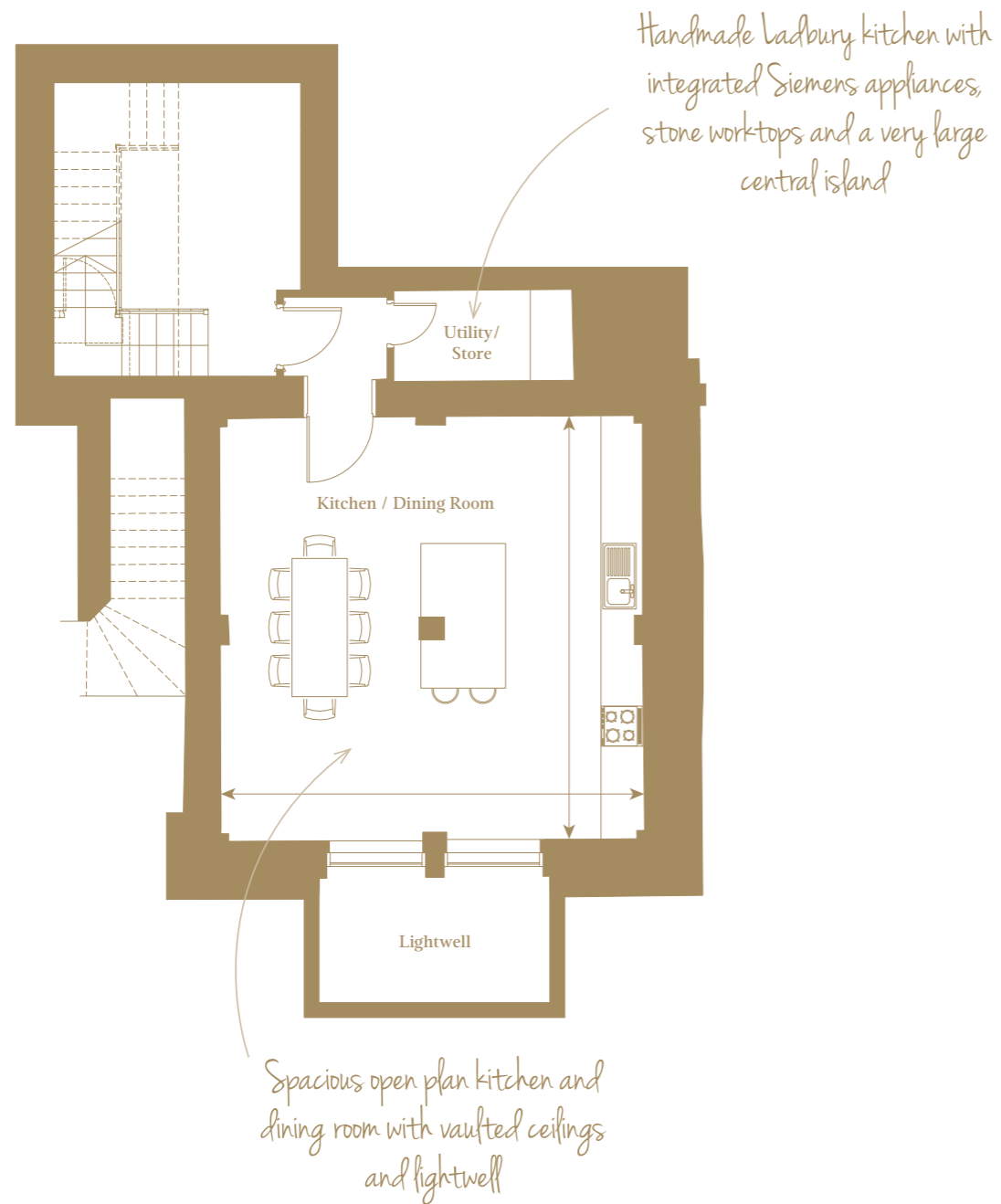
The information in this document is intended as a guide only and is subject to change without prior notice. Accordingly, due to the City & Country policy of continual improvement, the finished product may vary from the information provided and City & Country reserves the right to amend the specification. All dimensions stated are approximate only with maximum dimensions and may alter through the construction phase and with interior finishes. You are therefore advised not to order any goods which depend upon accurate dimensions before carrying out a check measure within your reserved property.

CITY & COUNTRY

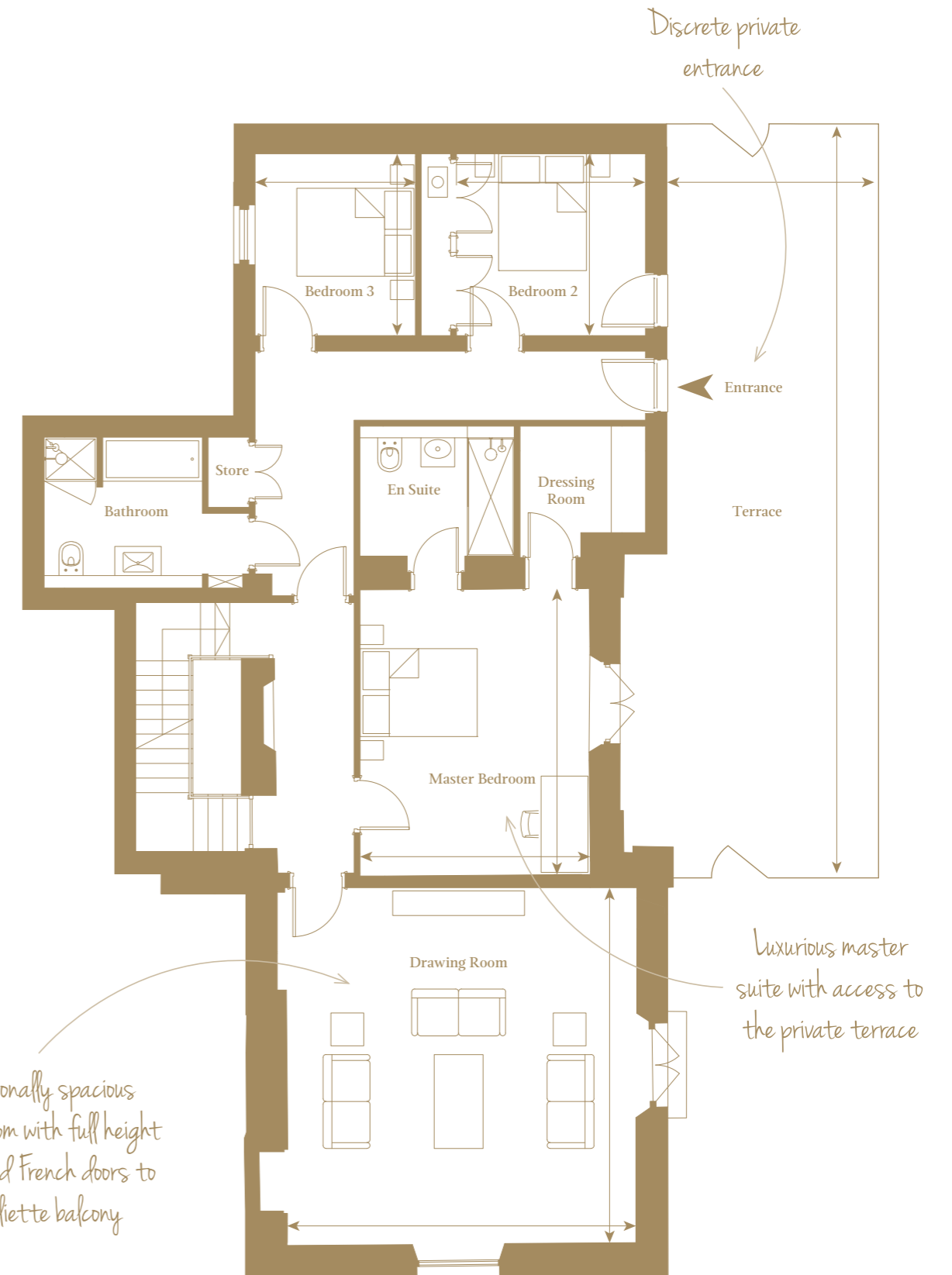
THE LIND

THREE BEDROOM, GROUND FLOOR, TWO STOREY APARTMENT

The Lind is a beautiful three bedroom apartment that is arranged over two storeys, boasting a dual-aspect drawing room, complete with Juliette balcony and views over the gardens to the woodland beyond. The master bedroom is grand and spacious, featuring access to the private terrace, dressing room and luxury en suite with walk in shower. At lower ground level the open plan kitchen and dining space boasts feature vaulted ceilings, offering a unique and spacious area for entertaining.



LOWER GROUND



GROUND FLOOR