

THE
PLAYFAIR
AT DONALDSON'S



SIGNATURE
COLLECTION

Apartments B10 & B15

Two bedroom apartment

CITY & COUNTRY

The information in this document is intended as a guide only and is subject to change without prior notice. Accordingly, due to the City & Country policy of continual improvement, the finished product may vary from the information provided and City & Country reserves the right to amend the specification. Photography shown may be of similar apartments at Donaldson's and is indicative only. All dimensions stated are approximate only with maximum dimensions and may alter through the construction phase and with interior finishes. You are therefore advised not to order any carpets, appliances or other goods which depend upon accurate dimensions before carrying out a check measure within your reserved property.



Two bedroom apartment

SIGNATURE
COLLECTION

THE
PLAYFAIR
AT DONALDSON'S

Apartments B10 & B15

**A bright and light apartment
with chapel and garden views**

A wonderful two bedroom, single storey apartment, boasting a fantastic open plan kitchen, dining and living area. Within this room there is a beautiful bay window, making the space bright and airy. The master bedroom is spacious and boasts incredible views out of the original bay window to the chapel and arboretum garden. The master also benefits from a luxurious en suite with a tear drop bath or wet room located in an original turret. There is a further spacious bedroom with an area for a study or dressing table and a contemporary en suite shower room. This property features an separate WC and utility space

B10 - Dimensions

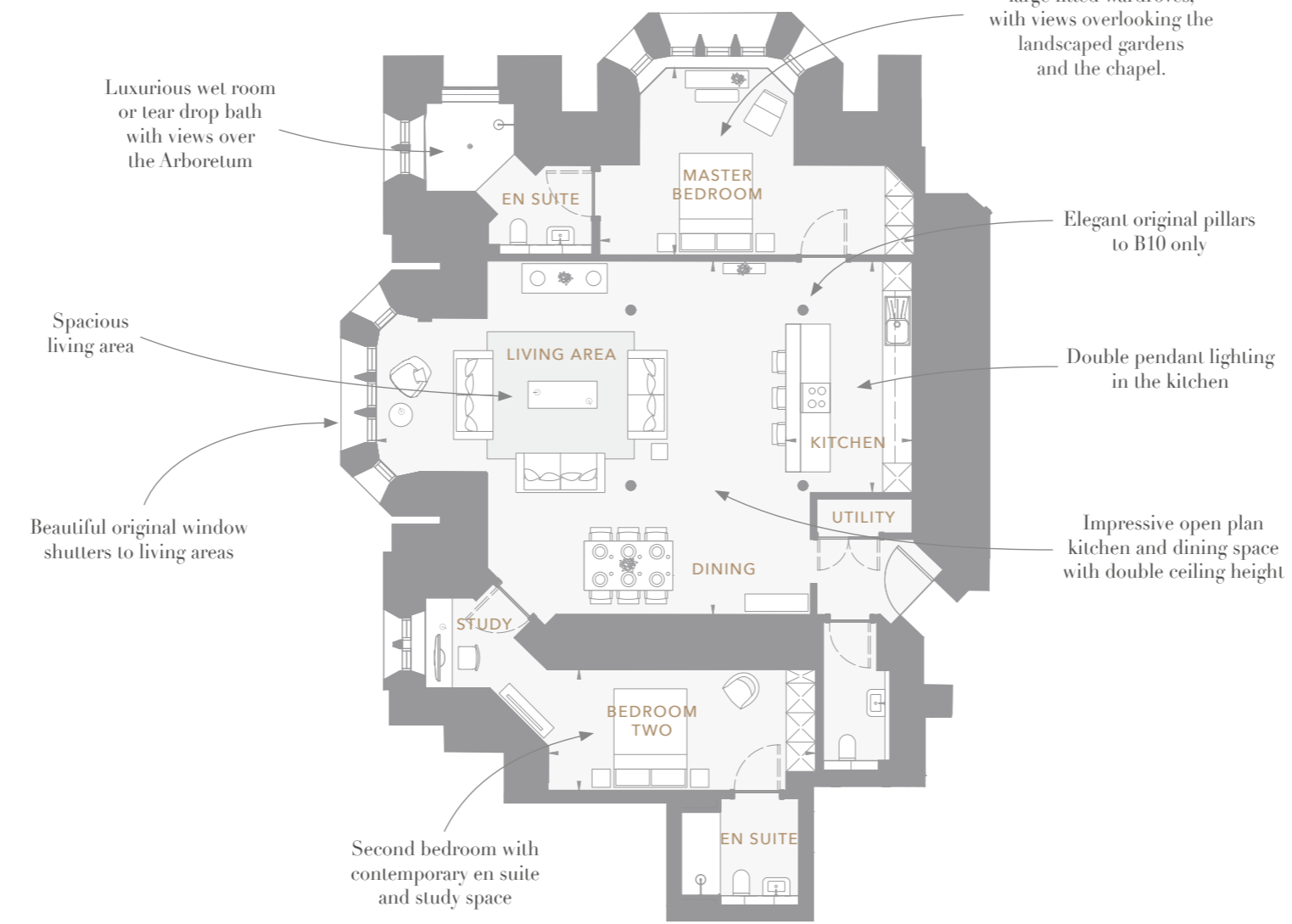
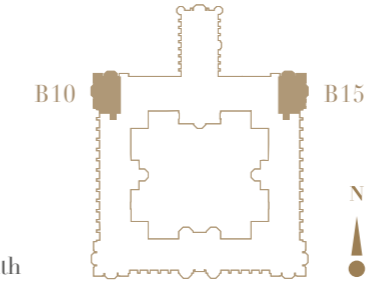
Total NSA 1,327 sq ft (123.3 sq m)

Living / Dining	27' 3" x 23' 7"	(8.30m x 7.19m)
Kitchen	15' 5" x 8' 5"	(4.70m x 2.56m)
Master Bedroom	20' 12" x 12' 6"	(5.49m x 3.91m)
Bedroom 2	17' 9" x 8' 1"	(5.43m x 2.46m)

B15 - Dimensions

Total NSA 1,352 sq ft (125.6 sq m)

Living / Dining	28' 9" x 23' 4"	(8.77m x 7.10m)
Kitchen	10' 4" x 8' 5"	(3.16m x 2.56m)
Master Bedroom	18' 0" x 12' 9"	(5.49m x 3.91m)
Bedroom 2	17' 6" x 8' 1"	(5.34m x 2.46m)



Spacious Master suite with large fitted wardroves, with views overlooking the landscaped gardens and the chapel.



Floor plan shown is Apartment B10. Apartment B15 is handed and therefore room sizes, layout, furnishing/fittings and views may vary.

Photography shown of apartment B15 at Donaldson's