



THE GENERAL

BRISTOL

Floorplan – Plot 04-20

2 bedroom apartment

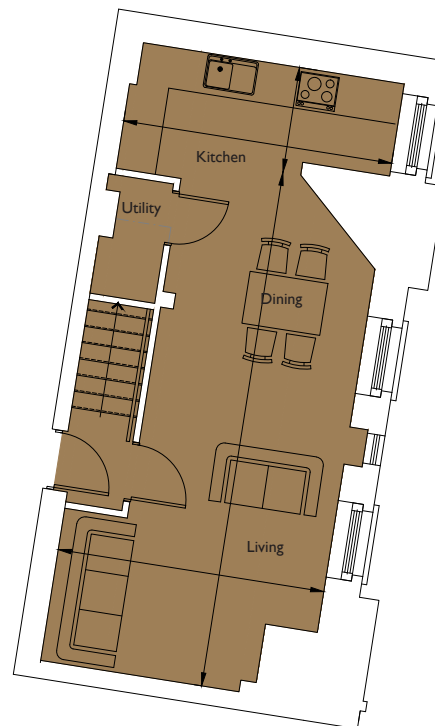
Second and Mezzanine Floor

Total area 825sq ft (76.6sq m)

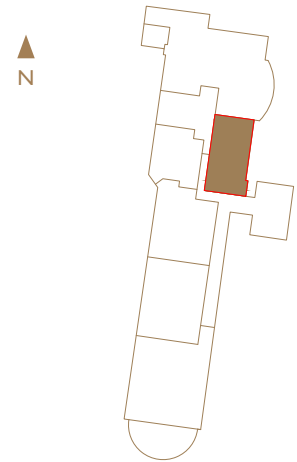
Living/Dining	25ft 11in x 13ft 5in	(7.9m x 4.1m)
Kitchen	5ft 3in x 13ft 5in	(1.6m x 4.1m)
Bedroom 1	8ft 10in x 13ft 9in	(2.7m x 4.2m)
Bedroom 2	8ft 2in x 13ft 9in	(2.5m x 4.2m)



Second Floor Mezzanine



Second Floor



01179 255 333
sales@cityandcountry.co.uk
www.cityandcountry.co.uk

CITY & COUNTRY