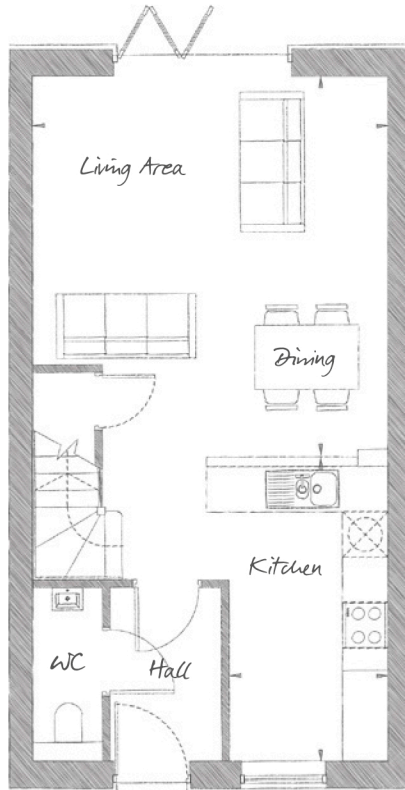


THE GREENFINCH

TWO BEDROOM, MID/END TERRACE HOUSE | 903 SQ FT (84 SQ M)

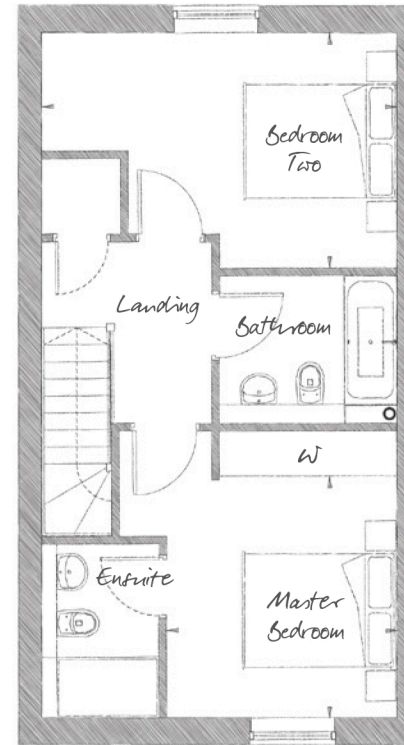
PLOTS 51-54, 56-62



GROUND FLOOR

Living / Dining	16' 8" x 15' 5" (5.07m x 4.70m)
Kitchen	13' 4" x 6' 10" (4.06m x 2.09m)

Plots 58 and 59 are end of terrace and therefore have additional windows.
Ask our Sales Executives for further information.



FIRST FLOOR

Master Bedroom	10' 7" x 10' 0" (3.23m x 3.04m)
Bedroom Two	13' 5" x 10' 4" (4.10m x 3.15m)