

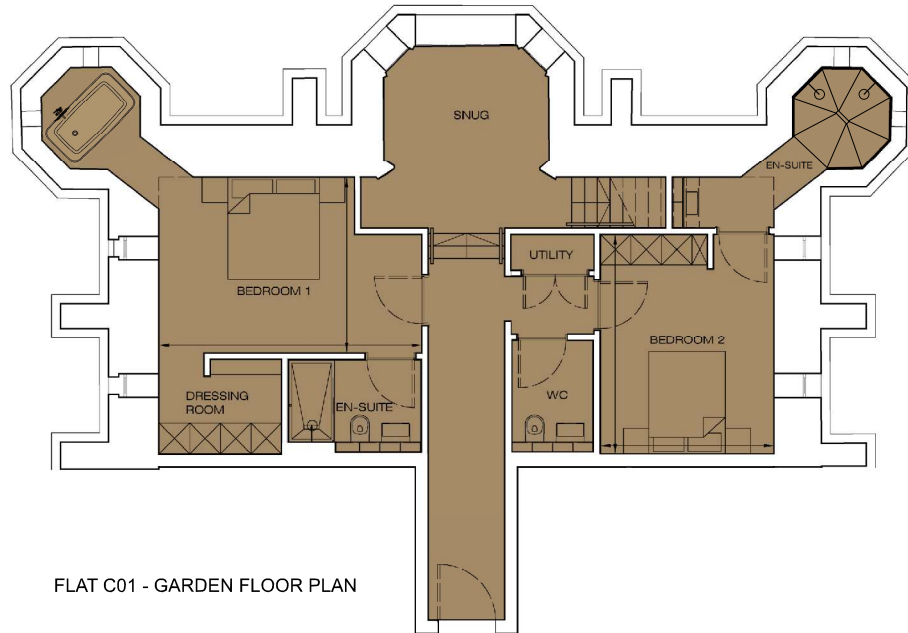
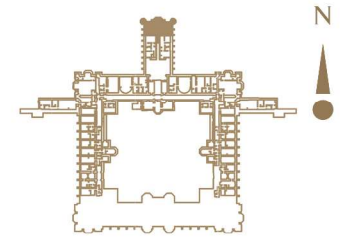
# THE PLAYFAIR

AT DONALDSON'S

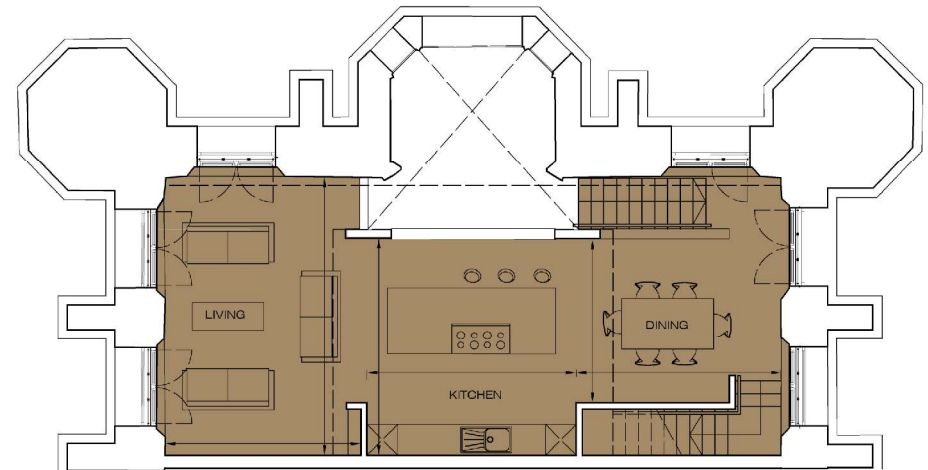
## Floorplan - Plot C01 NOT TO SCALE

2 Bedroom Apartment | Garden floor | Total area 1919 sq ft (178.3 sq m)

Living	17' 11" x 12' 7"	(5.45m x 3.84m)	Bedroom 1	16' 11" x 11' 4"	(5.16m x 3.46m)
Dining	13' 2" x 10' 7"	(4.02m x 3.22m)	Bedroom 2	14' 1" x 11' 2"	(4.30m x 3.40m)
Kitchen	13' 11" x 13' 5"	(4.26m x 4.10m)			
Family Room	17' 1" x 14' 1"	(5.22m x 4.29m)			



FLAT C01 - GARDEN FLOOR PLAN



FLAT C01 - GROUND FLOR PLAN

0131 610 6000

e: sales@cityandcountry.co.uk | w: www.cityandcountry.co.uk

CITY & COUNTRY

The information in this document is intended as a guide only and is subject to change without prior notice. Accordingly, due to the City & Country policy of continual improvement, the finished product may vary from the information provided and City & Country reserves the right to amend the specification. All dimensions stated are approximate only with maximum dimensions and may alter through the construction phase and with interior finishes. You are therefore advised not to order any carpets, appliances or other goods which depend upon accurate dimensions before carrying out a check measure within your reserved property. December 2017.

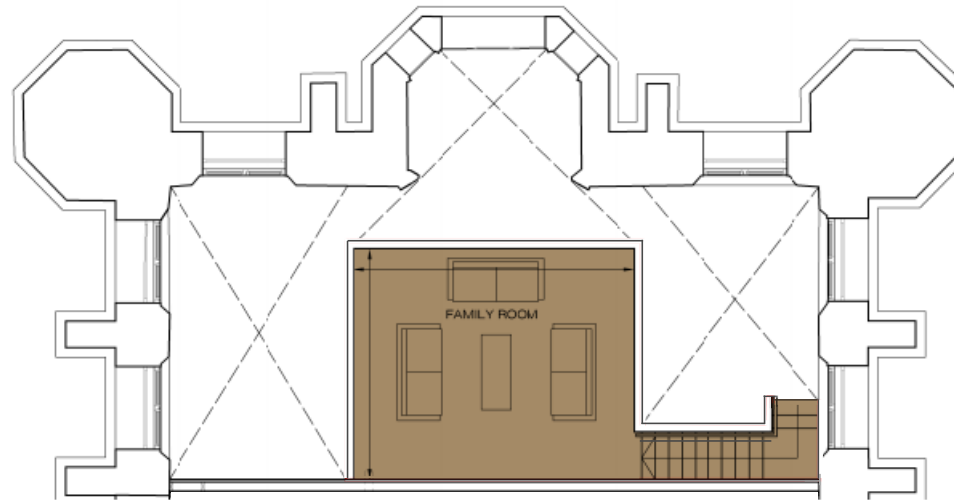
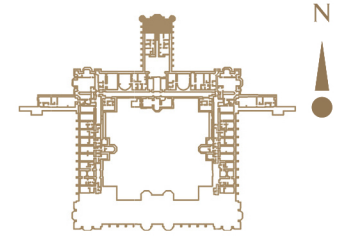
THE  
**PLAYFAIR**

AT DONALDSON'S

**Floorplan - Plot C01** NOT TO SCALE

2 Bedroom Apartment | Garden floor | Total area 1919 sq ft (178.3 sq m)

Living	17' 11" x 12' 7"	(5.45m x 3.84m)	Bedroom 1	16' 11" x 11' 4"	(5.16m x 3.46m)
Dining	13' 2" x 10' 7"	(4.02m x 3.22m)	Bedroom 2	14' 1" x 11' 2"	(4.30m x 3.40m)
Kitchen	13' 11" x 13' 5"	(4.26m x 4.10m)			
Family Room	17' 1" x 14' 1"	(5.22m x 4.29m)			



FLAT C01 - MEZZANINE FLOOR PLAN

0131 610 6000

e: sales@cityandcountry.co.uk | w: www.cityandcountry.co.uk

CITY & COUNTRY