



Floorplan – Plot 04-21

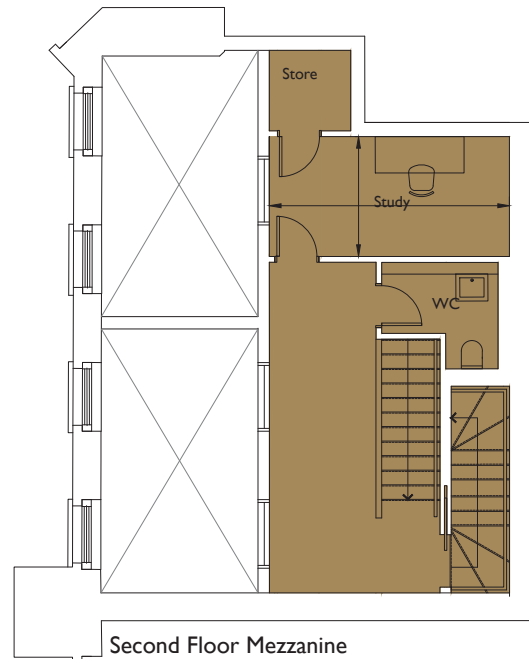
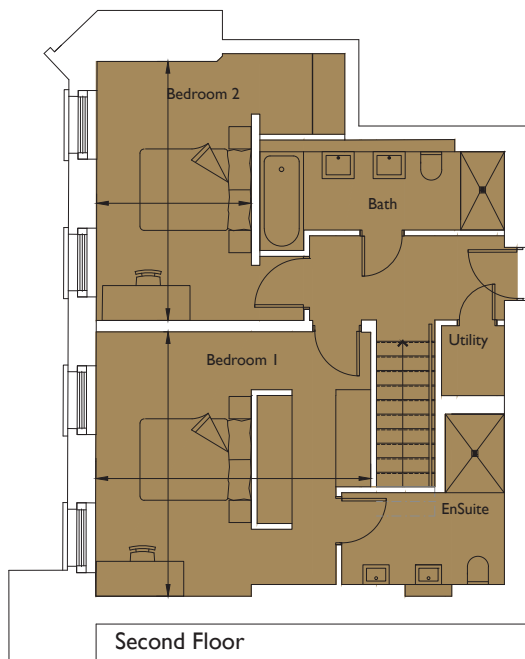
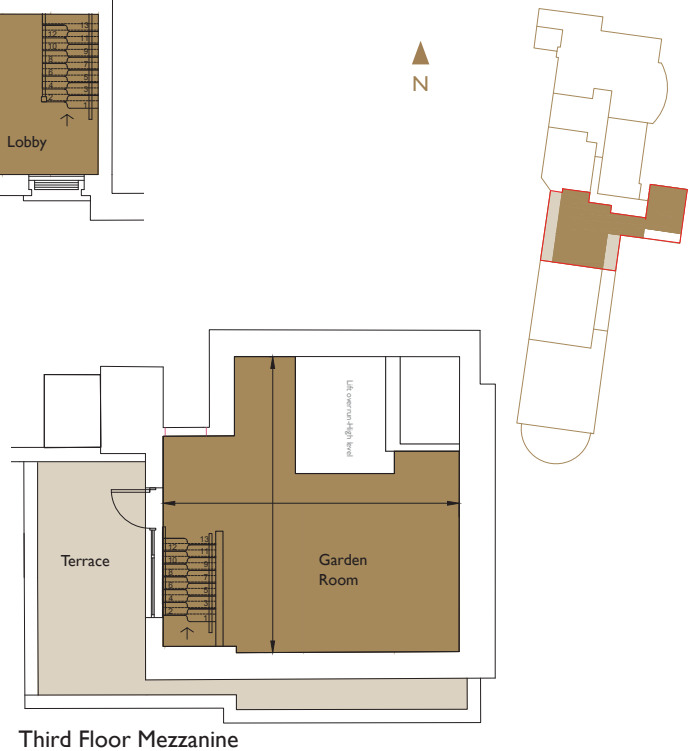
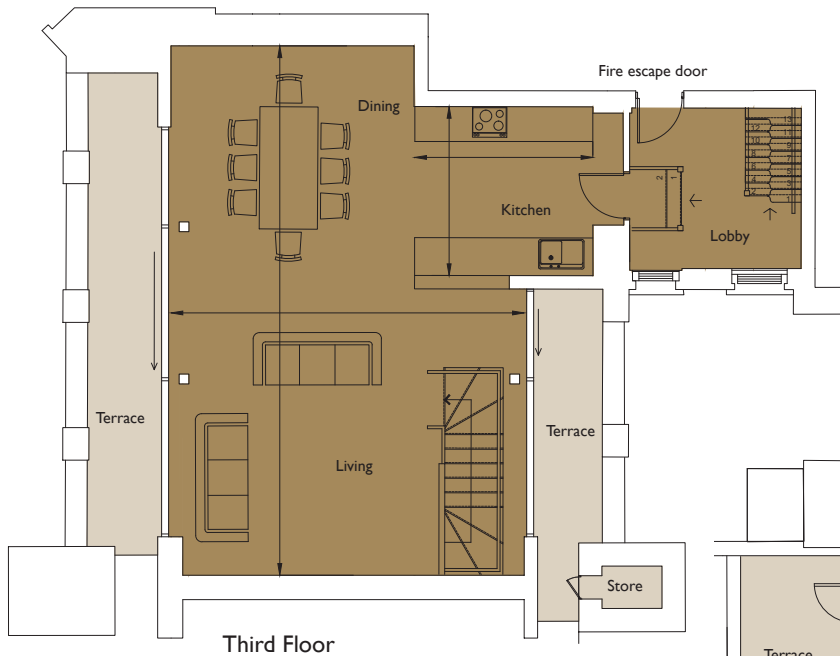
2 bedroom and study apartment

Second and Mezzanine, Third and Mezzanine Floor

Total area 1964sq ft (183sq m)

THE GENERAL BRISTOL

Living/Dining/	29ft 10in x 13ft 9in	(9.1m x 4.2m)
Kitchen	11ft 10in x 9ft 6in	(3.6m x 2.9m)
Bedroom 1	15ft 5in x 15ft 9in	(4.7m x 4.5m)
Bedroom 2	14ft 5in x 14ft 1in	(4.4m x 4.3m)
Study	13ft 5in x 6ft 11in	(4.1m x 2.1m)
Garden Room	16ft 4in x 16ft 7in	(5.0 x 5.1m)



01179 255 333
sales@cityandcountry.co.uk
www.cityandcountry.co.uk

CITY & COUNTRY