

# Floorplan - Plot SW04

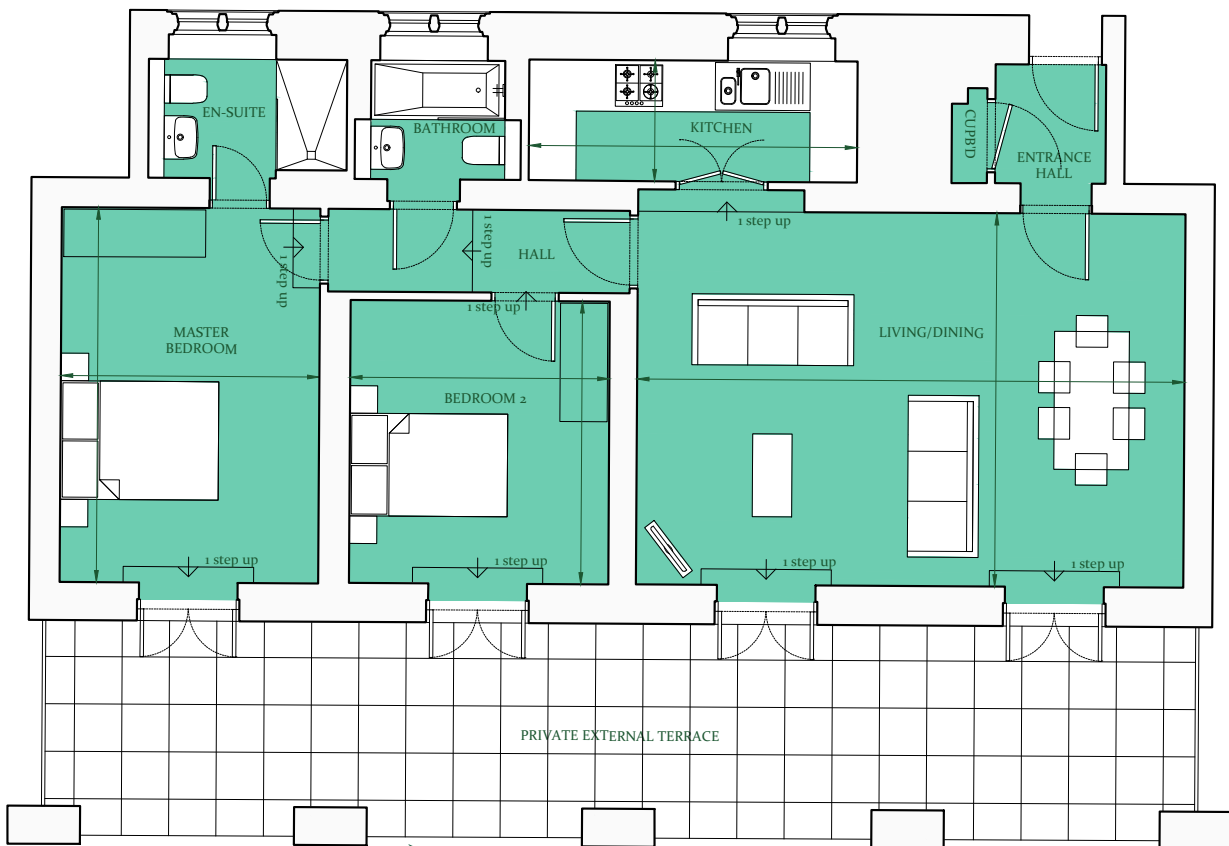


2 Bedroom Apartment with External Private Terrace  
Garden Level  
Total area 956 sq ft (88.8 sq m)

Living/Dining	22' 10" x 15' 1"	(7.0m x 4.6m)
Kitchen (max.)	13' 3" x 5' 1"	(4.1m x 1.6m)
Master Bedroom	15' 6" x 10' 10"	(4.7m x 3.3m)
Bedroom 2	11' 9" x 10' 10"	(3.6m x 3.3m)



Site Location Plan



Garden Level Floor Plan



01730 81 79 79

e:sales@cityandcountry.co.uk | w:www.cityandcountry.co.uk



The information in this document is intended as a guide only and is subject to change without prior notice. Accordingly, due to the City & Country policy of continual improvement, the finished product may vary from the information provided and City & Country reserves the right to amend the specification. All dimensions stated are approximate only with maximum dimensions and may alter through the construction phase and with interior finishes. You are therefore advised not to order any carpets, appliances or other goods which depend upon accurate dimensions before carrying out a check measure within your reserved property.  
May 2017.